



PRINCE SHRI VENKATESWARA ARTS AND SCIENCE COLLEGE

Gowrivakkam, Chennai-600073

Affiliated to University of Madras, ISO 9001:2015 Certified Institution

| | | | | | | |
|----|---|---|---|---|---|---|
| 8 | Rate the student's ability to contribute for reaching the goal of organization (Related to Academic process and performance of students) | 4 | 2 | 0 | 0 | 0 |
| 9 | Rate the students of PSVASC on technical knowledge and skills (Related to Academic process and performance of students) | 6 | 0 | 0 | 0 | 0 |
| 10 | Rate the students of PSVASC on leadership quality and taking up responsibilities (Related to Academic process and performance of students) | 5 | 0 | 1 | 0 | 0 |
| 11 | Rate the students of PSVASC on relationship with seniors / peers / subordinates and work ethics (Related to Academic process and performance of students) | 5 | 0 | 0 | 1 | 0 |
| 12 | Rate students of PSVASC on Creativity and Innovations. (Related to Academic process and performance of students) | 4 | 2 | 0 | 0 | 0 |
| 13 | Rate the students of PSVASC on lifelong learning and technology adaptability (Related to Academic process and performance of students) | 5 | 1 | 0 | 0 | 0 |
| 14 | Rate students of PSVASC on sustainability, environment awareness and social activities (Related to Academic process and performance of students) | 5 | 1 | 0 | 0 | 0 |
| 15 | Rate the learning ambience of the institution (Related to ambience of the institution) | 6 | 0 | 0 | 0 | 0 |
| 16 | Rate the functioning of Placement Cell (Related to ambience of the institution) | 5 | 0 | 1 | 0 | 0 |
| 17 | Rate the laboratory and research facilities of the institution (Related to infrastructure facility of the institution) | 4 | 2 | 0 | 0 | 0 |
| 18 | Rate the infrastructure facility of the institution to organize Pool Campus (Related to infrastructure facility of the institution) | 6 | 0 | 0 | 0 | 0 |
| 19 | Rate the WIFI facility with adequate bandwidth provided by the institution (Related to infrastructure facility of the institution) | 5 | 1 | 0 | 0 | 0 |
| 20 | Rate the overall impression of the institution (Related to infrastructure facility of the institution) | 4 | 1 | 0 | 1 | 0 |



B. Kalpana
PRINCIPAL
PRINCE SHRI VENKATESHWARA
ARTS AND SCIENCE COLLEGE
GOWRIVAKKAM, CHENNAI-600 073



PRINCE SHRI VENKATESWARA ARTS AND SCIENCE COLLEGE

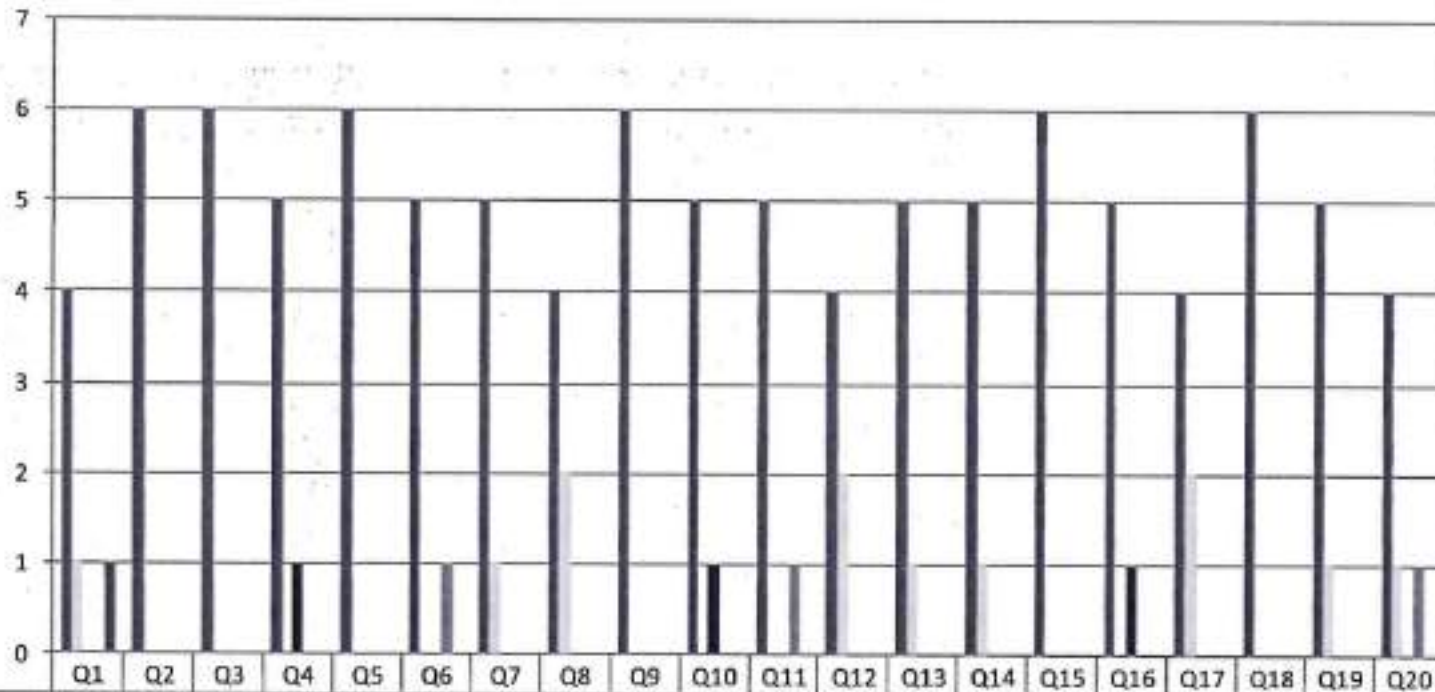
Gowrivakkam, Chennai-600073

Affiliated to University of Madras, ISO 9001:2015 Certified Institution.

**EMPLOYER FEEDBACK ON CURRICULUM, INFRASTRUCTURE
FACILITIES & AMBIENCE OF THE INSTITUTION - 2019-2020**

B.Sc. BIOCHEMISTRY

(NUMBER OF RESPONDENTS - 6)



| | Q1 | Q2 | Q3 | Q4 | Q5 | Q6 | Q7 | Q8 | Q9 | Q10 | Q11 | Q12 | Q13 | Q14 | Q15 | Q16 | Q17 | Q18 | Q19 | Q20 |
|-----------------------|----|----|----|----|----|----|----|----|----|-----|-----|-----|-----|-----|-----|-----|-----|-----|-----|-----|
| Strongly Agree (5) | 4 | 6 | 6 | 5 | 6 | 5 | 5 | 4 | 6 | 5 | 5 | 4 | 5 | 5 | 6 | 5 | 4 | 6 | 5 | 4 |
| Agree (4) | 1 | 0 | 0 | 0 | 0 | 0 | 1 | 2 | 0 | 0 | 0 | 2 | 1 | 1 | 0 | 0 | 2 | 0 | 1 | 1 |
| Neutral (3) | 0 | 0 | 0 | 1 | 0 | 0 | 0 | 0 | 0 | 1 | 0 | 0 | 0 | 0 | 0 | 1 | 0 | 0 | 0 | 0 |
| Disagree (2) | 0 | 0 | 0 | 0 | 0 | 1 | 0 | 0 | 0 | 0 | 1 | 0 | 0 | 0 | 0 | 0 | 0 | 0 | 0 | 0 |
| Strongly Disagree (1) | 1 | 0 | 0 | 0 | 0 | 0 | 0 | 0 | 0 | 0 | 0 | 0 | 0 | 0 | 0 | 0 | 0 | 0 | 0 | 0 |



P. Kalpana
PRINCIPAL
PRINCE SHRI VENKATESHWARA
ARTS AND SCIENCE COLLEGE
GOWRIVAKKAM, CHENNAI-600 073.



PRINCE SHRI VENKATESWARA ARTS AND SCIENCE COLLEGE

Gowrivaldkam, Chennai-600073.

Affiliated to University of Madras, ISO 9001:2015 Certified Institution.

EMPLOYER FEEDBACK ON CURRICULUM, INFRASTRUCTURE FACILITIES & AMBIENCE OF THE INSTITUTION – ANALYSIS REPORT

Academic Year 2019-20
Department B.Sc.-Microbiology
Number of Respondents 6

Feedback Rate: Strongly Agree (5), Agree (4), Neutral (3), Disagree (2), Strongly Disagree (1)

| S. No | Feedback on Curriculum, infrastructure facilities & ambience of the institution | 5 | 4 | 3 | 2 | 1 |
|-------|--|---|---|---|---|---|
| 1 | Rate the students of PSVASC on general communication skills. (Related to Academic process and performance of students) | 5 | 0 | 1 | 0 | 0 |
| 2 | Rate the students of PSVASC on developing practical solutions to work place problems (Related to Academic process and performance of students) | 4 | 1 | 0 | 1 | 0 |
| 3 | Rate the students of PSVASC on working as a team (Related to Academic process and performance of students) | 4 | 2 | 0 | 0 | 0 |
| 4 | Rate the students of PSVASC on taking appropriate level of responsibility (Related to Academic process and performance of students) | 3 | 2 | 1 | 0 | 0 |
| 5 | Rate the students of PSVASC on Time Management (Related to Academic process and performance of students) | 5 | 1 | 0 | 0 | 0 |
| 6 | Rate the students of PSVASC on Decision Making (Related to Academic process and performance of students) | 5 | 1 | 0 | 0 | 0 |
| 7 | Rate the students of PSVASC on response to workplace challenges (Related to Academic process and performance of students) | 4 | 1 | 0 | 0 | 1 |
| 8 | Rate the student's ability to contribute for reaching the goal of organization (Related to Academic process and performance of students) | 6 | 0 | 0 | 0 | 0 |

3/2/20



PRINCE SHRI VENKATESWARA ARTS AND SCIENCE COLLEGE

Gowrivakkam, Chennai-600073

Affiliated to University of Madras, ISO 9001:2015 Certified Institution.

| | | | | | | |
|----|---|---|---|---|---|---|
| 9 | Rate the students of PSVASC on technical knowledge and skills (Related to Academic process and performance of students) | 4 | 1 | 1 | 0 | 0 |
| 10 | Rate the students of PSVASC on leadership quality and taking up responsibilities (Related to Academic process and performance of students) | 6 | 0 | 0 | 0 | 0 |
| 11 | Rate the students of PSVASC on relationship with seniors / peers / subordinates and work ethics (Related to Academic process and performance of students) | 4 | 1 | 1 | 0 | 0 |
| 12 | Rate students of PSVASC on Creativity and Innovations. (Related to Academic process and performance of students) | 5 | 0 | 0 | 1 | 0 |
| 13 | Rate the students of PSVASC on lifelong learning and technology adaptability (Related to Academic process and performance of students) | 4 | 2 | 0 | 0 | 0 |
| 14 | Rate students of PSVASC on sustainability, environment awareness and social activities (Related to Academic process and performance of students) | 6 | 0 | 0 | 0 | 0 |
| 15 | Rate the learning ambience of the institution (Related to ambience of the institution) | 4 | 1 | 1 | 0 | 0 |
| 16 | Rate the functioning of Placement Cell (Related to ambience of the institution) | 5 | 0 | 0 | 0 | 1 |
| 17 | Rate the laboratory and research facilities of the institution (Related to infrastructure facility of the institution) | 6 | 0 | 0 | 0 | 0 |
| 18 | Rate the infrastructure facility of the institution to organize Pool Campus (Related to infrastructure facility of the institution) | 5 | 0 | 0 | 1 | 0 |
| 19 | Rate the WIFI facility with adequate bandwidth provided by the institution (Related to infrastructure facility of the institution) | 5 | 0 | 1 | 0 | 0 |
| 20 | Rate the overall impression of the institution (Related to infrastructure facility of the institution) | 6 | 0 | 0 | 0 | 0 |



B. Kalpana
PRINCIPAL
PRINCE SHRI VENKATESHWARA
ARTS AND SCIENCE COLLEGE
GOWRIVAKKAM, CHENNAI-600 073



PRINCE SHRI VENKATESWARA ARTS AND SCIENCE COLLEGE

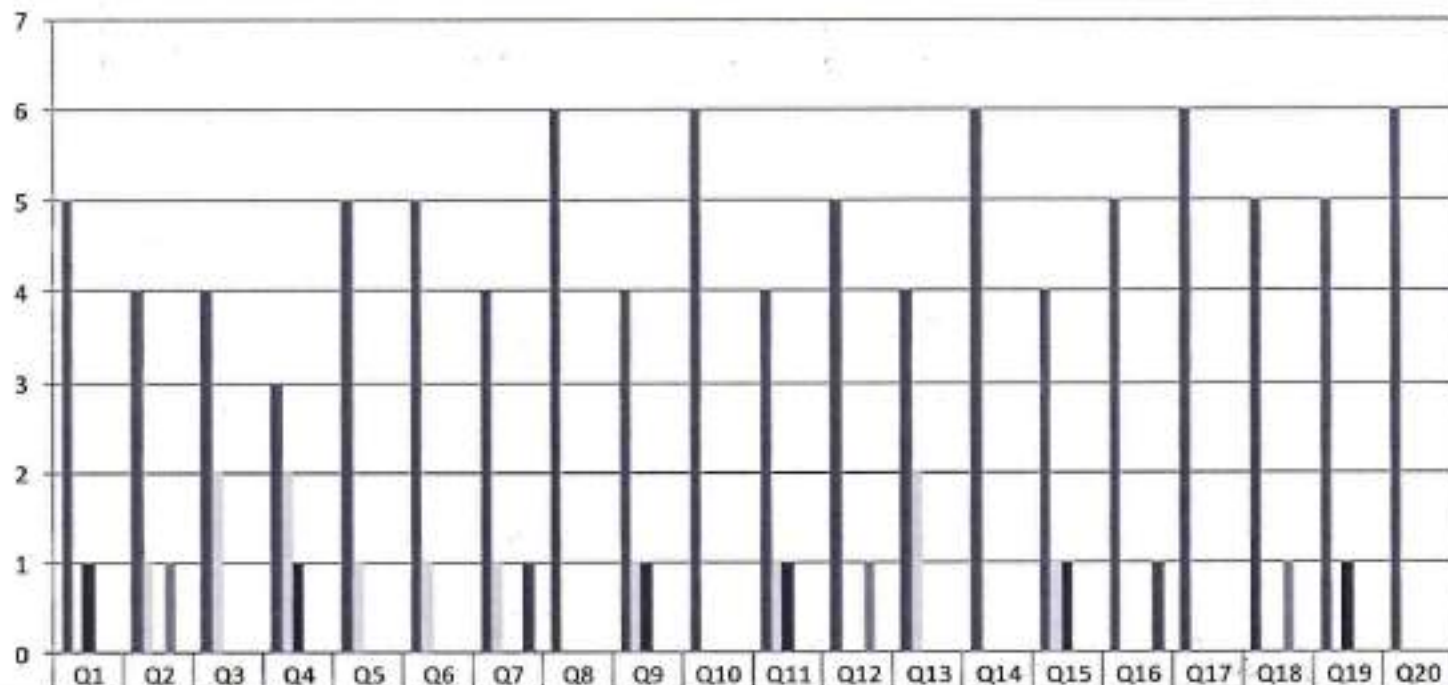
Gowrivalkham, Chennai-600073.

Affiliated to University of Madras, ISO 9001:2015 Certified Institution.

EMPLOYER FEEDBACK ON CURRICULUM, INFRASTRUCTURE FACILITIES & AMBIENCE OF THE INSTITUTION - 2019-2020

B.Sc. MICROBIOLOGY

(NUMBER OF RESPONDENTS - 6)



13 Kalpana
PRINCIPAL
 PRINCE SHRI VENKATESHWARA
 ARTS AND SCIENCE COLLEGE
 GOWRIVALKHAM, CHENNAI-600 073.



PRINCE SHRI VENKATESWARA ARTS AND SCIENCE COLLEGE

Gowrivakkam, Chennai-600073

Affiliated to University of Madras, ISO 9001:2015 Certified Institution

EMPLOYER FEEDBACK ON CURRICULUM, INFRASTRUCTURE FACILITIES & AMBIENCE OF THE INSTITUTION – ANALYSIS REPORT

Academic Year

2019-20

Department

B.Sc. Electronics and Communication Science

Number of Respondents

4

Feedback Rate: Strongly Agree (5), Agree (4), Neutral (3), Disagree (2), Strongly Disagree (1)

| S. No | Feedback on Curriculum, infrastructure facilities & ambience of the institution | 5 | 4 | 3 | 2 | 1 |
|-------|--|---|---|---|---|---|
| 1 | Rate the students of PSVASC on general communication skills. (Related to Academic process and performance of students) | 2 | 1 | 0 | 0 | 1 |
| 2 | Rate the students of PSVASC on developing practical solutions to work place problems (Related to Academic process and performance of students) | 2 | 2 | 0 | 0 | 0 |
| 3 | Rate the students of PSVASC on working as a team (Related to Academic process and performance of students) | 2 | 2 | 0 | 0 | 0 |
| 4 | Rate the students of PSVASC on taking appropriate level of responsibility (Related to Academic process and performance of students) | 2 | 2 | 0 | 0 | 0 |
| 5 | Rate the students of PSVASC on Time Management (Related to Academic process and performance of students) | 2 | 2 | 0 | 0 | 0 |
| 6 | Rate the students of PSVASC on Decision Making (Related to Academic process and performance of students) | 2 | 1 | 1 | 0 | 0 |
| 7 | Rate the students of PSVASC on response to workplace challenges (Related to Academic process and performance of students) | 2 | 2 | 0 | 0 | 0 |

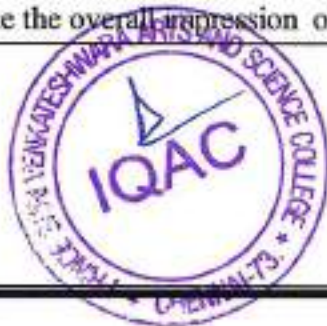


PRINCE SHRI VENKATESWARA ARTS AND SCIENCE COLLEGE

Gowrivakkam, Chennai-600073.

Affiliated to University of Madras, ISO 9001:2015 Certified Institution

| | | | | | | |
|----|---|---|---|---|---|---|
| 8 | Rate the student's ability to contribute for reaching the goal of organization (Related to Academic process and performance of students) | 3 | 0 | 0 | 1 | 0 |
| 9 | Rate the students of PSVASC on technical knowledge and skills (Related to Academic process and performance of students) | 4 | 0 | 0 | 0 | 0 |
| 10 | Rate the students of PSVASC on leadership quality and taking up responsibilities (Related to Academic process and performance of students) | 4 | 0 | 0 | 0 | 0 |
| 11 | Rate the students of PSVASC on relationship with seniors / peers / subordinates and work ethics (Related to Academic process and performance of students) | 2 | 2 | 0 | 0 | 0 |
| 12 | Rate students of PSVASC on Creativity and Innovations. (Related to Academic process and performance of students) | 3 | 0 | 0 | 1 | 0 |
| 13 | Rate the students of PSVASC on lifelong learning and technology adaptability (Related to Academic process and performance of students) | 3 | 0 | 1 | 0 | 0 |
| 14 | Rate students of PSVASC on sustainability, environment awareness and social activities (Related to Academic process and performance of students) | 3 | 1 | 0 | 0 | 0 |
| 15 | Rate the learning ambience of the institution (Related to ambience of the institution) | 3 | 0 | 0 | 1 | 0 |
| 16 | Rate the functioning of Placement Cell (Related to ambience of the institution) | 2 | 2 | 0 | 0 | 0 |
| 17 | Rate the laboratory and research facilities of the institution (Related to infrastructure facility of the institution) | 4 | 0 | 0 | 0 | 0 |
| 18 | Rate the infrastructure facility of the institution to organize Pool Campus (Related to infrastructure facility of the institution) | 3 | 0 | 0 | 0 | 1 |
| 19 | Rate the WIFI facility with adequate bandwidth provided by the institution (Related to infrastructure facility of the institution) | 3 | 1 | 0 | 0 | 0 |
| 20 | Rate the overall impression of the institution (Related to infrastructure facility of the institution) | 3 | 1 | 0 | 0 | 0 |



B. Kalpana
PRINCIPAL
PRINCE SHRI VENKATESHWARA
ARTS AND SCIENCE COLLEGE
GOWRIVAKKAM, CHENNAI-600 073.

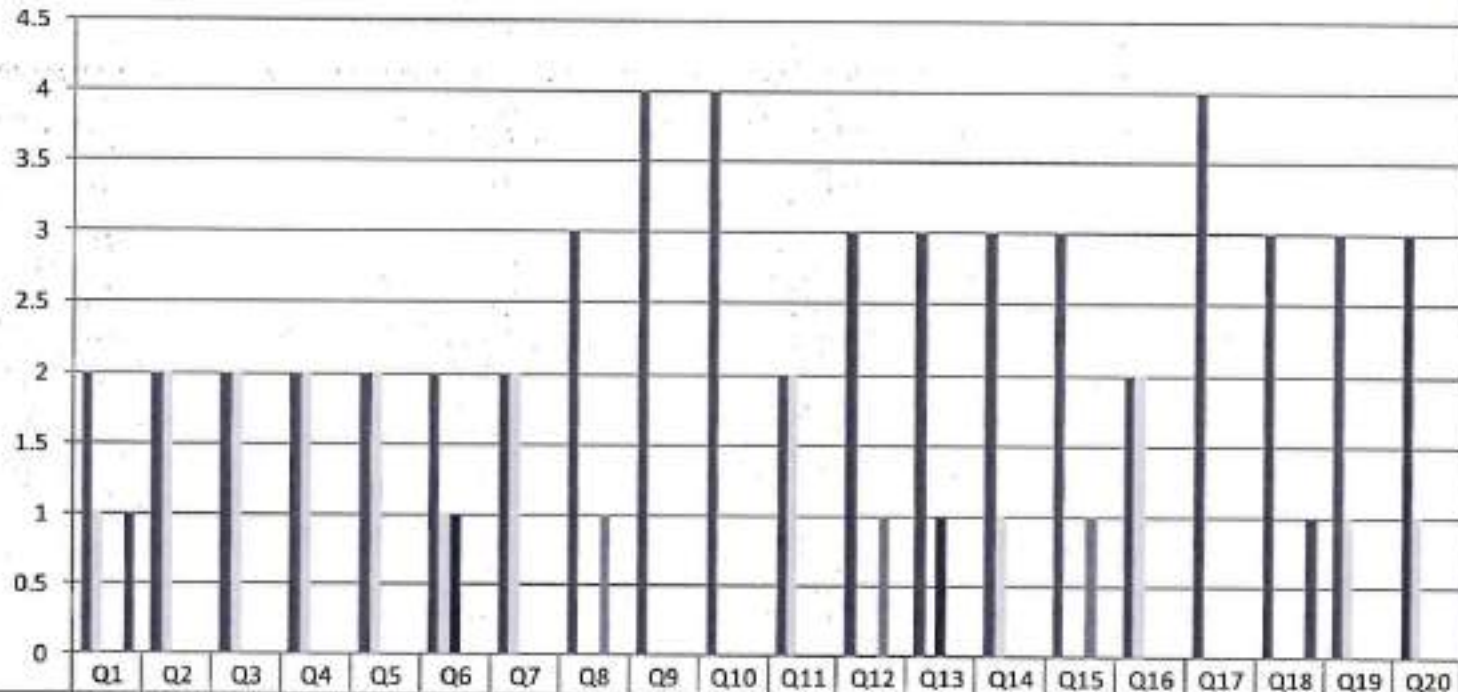


PRINCE SHRI VENKATESWARA ARTS AND SCIENCE COLLEGE

Gowrivakkam, Chennai-600073.

Affiliated to University of Madras, ISO 9001:2015 Certified Institution

**EMPLOYER FEEDBACK ON CURRICULUM, INFRASTRUCTURE
FACILITIES & AMBIENCE OF THE INSTITUTION - 2019-2020
B.Sc. ELECTRONICS AND COMMUNICATION SCIENCE
(NUMBER OF RESPONDENTS - 4)**



| | Q1 | Q2 | Q3 | Q4 | Q5 | Q6 | Q7 | Q8 | Q9 | Q10 | Q11 | Q12 | Q13 | Q14 | Q15 | Q16 | Q17 | Q18 | Q19 | Q20 |
|-----------------------|----|----|----|----|----|----|----|----|----|-----|-----|-----|-----|-----|-----|-----|-----|-----|-----|-----|
| Strongly Agree (5) | 2 | 2 | 2 | 2 | 2 | 2 | 2 | 3 | 4 | 4 | 2 | 3 | 3 | 3 | 3 | 2 | 4 | 3 | 3 | 3 |
| Agree (4) | 1 | 2 | 2 | 2 | 2 | 1 | 2 | 0 | 0 | 0 | 2 | 0 | 0 | 1 | 0 | 2 | 0 | 0 | 1 | 1 |
| Neutral (3) | 0 | 0 | 0 | 0 | 0 | 1 | 0 | 0 | 0 | 0 | 0 | 0 | 1 | 0 | 0 | 0 | 0 | 0 | 0 | 0 |
| Disagree (2) | 0 | 0 | 0 | 0 | 0 | 0 | 0 | 1 | 0 | 0 | 0 | 1 | 0 | 0 | 1 | 0 | 0 | 0 | 0 | 0 |
| Strongly Disagree (1) | 1 | 0 | 0 | 0 | 0 | 0 | 0 | 0 | 0 | 0 | 0 | 0 | 0 | 0 | 0 | 0 | 0 | 0 | 0 | 0 |



P. Kalpana
PRINCIPAL
PRINCE SHRI VENKATESHWARA
ARTS AND SCIENCE COLLEGE
GOWRIVAKKAM, CHENNAI-600 073.



PRINCE SHRI VENKATESWARA ARTS AND SCIENCE COLLEGE

Gowrivakkam, Chennai-600073

Affiliated to University of Madras, ISO 9001:2015 Certified Institution

EMPLOYER FEEDBACK ON CURRICULUM, INFRASTRUCTURE FACILITIES & AMBIENCE OF THE INSTITUTION – ANALYSIS REPORT

Academic Year 2019-20
Department B.Sc.-Computer Science
Number of Respondents 7

Feedback Rate: Strongly Agree (5), Agree (4), Neutral (3), Disagree (2), Strongly Disagree (1)

| S. No | Feedback on Curriculum, infrastructure facilities & ambience of the institution | 5 | 4 | 3 | 2 | 1 |
|-------|--|---|---|---|---|---|
| 1 | Rate the students of PSVASC on general communication skills. (Related to Academic process and performance of students) | 4 | 1 | 1 | 0 | 1 |
| 2 | Rate the students of PSVASC on developing practical solutions to work place problems (Related to Academic process and performance of students) | 7 | 0 | 0 | 0 | 0 |
| 3 | Rate the students of PSVASC on working as a team (Related to Academic process and performance of students) | 4 | 2 | 0 | 1 | 0 |
| 4 | Rate the students of PSVASC on taking appropriate level of responsibility (Related to Academic process and performance of students) | 4 | 2 | 1 | 0 | 0 |
| 5 | Rate the students of PSVASC on Time Management (Related to Academic process and performance of students) | 5 | 2 | 0 | 0 | 0 |
| 6 | Rate the students of PSVASC on Decision Making (Related to Academic process and performance of students) | 5 | 1 | 0 | 0 | 1 |
| 7 | Rate the students of PSVASC on response to workplace challenges (Related to Academic process and performance of students) | 5 | 2 | 0 | 0 | 0 |
| 8 | Rate the student's ability to contribute for reaching the goal of organization (Related to Academic process and performance of students) | 5 | 1 | 1 | 0 | 0 |



PRINCE SHRI VENKATESWARA ARTS AND SCIENCE COLLEGE

Gowrivakkam, Chennai-600073.

Affiliated to University of Madras, ISO 9001:2015 Certified Institution

| | | | | | | |
|----|---|---|---|---|---|---|
| 9 | Rate the students of PSVASC on technical knowledge and skills (Related to Academic process and performance of students) | 5 | 2 | 0 | 0 | 0 |
| 10 | Rate the students of PSVASC on leadership quality and taking up responsibilities (Related to Academic process and performance of students) | 6 | 0 | 0 | 1 | 0 |
| 11 | Rate the students of PSVASC on relationship with seniors / peers / subordinates and work ethics (Related to Academic process and performance of students) | 6 | 1 | 0 | 0 | 0 |
| 12 | Rate students of PSVASC on Creativity and Innovations. (Related to Academic process and performance of students) | 4 | 2 | 1 | 0 | 0 |
| 13 | Rate the students of PSVASC on lifelong learning and technology adaptability (Related to Academic process and performance of students) | 6 | 1 | 0 | 0 | 0 |
| 14 | Rate students of PSVASC on sustainability, environment awareness and social activities (Related to Academic process and performance of students) | 6 | 0 | 0 | 1 | 0 |
| 15 | Rate the learning ambience of the institution (Related to ambience of the institution) | 5 | 2 | 0 | 0 | 0 |
| 16 | Rate the functioning of Placement Cell (Related to ambience of the institution) | 6 | 1 | 0 | 0 | 0 |
| 17 | Rate the laboratory and research facilities of the institution (Related to infrastructure facility of the institution) | 7 | 0 | 0 | 0 | 0 |
| 18 | Rate the infrastructure facility of the institution to organize Pool Campus (Related to infrastructure facility of the institution) | 5 | 2 | 0 | 0 | 0 |
| 19 | Rate the WIFI facility with adequate bandwidth provided by the institution (Related to infrastructure facility of the institution) | 4 | 2 | 1 | 0 | 0 |
| 20 | Rate the overall impression of the institution (Related to infrastructure facility of the institution) | 6 | 0 | 0 | 0 | 1 |



B. Kalpana
PRINCIPAL
PRINCE SHRI VENKATESHWARA
ARTS AND SCIENCE COLLEGE
GOWRIVAKKAM, CHENNAI-600 073.



PRINCE SHRI VENKATESWARA ARTS AND SCIENCE COLLEGE

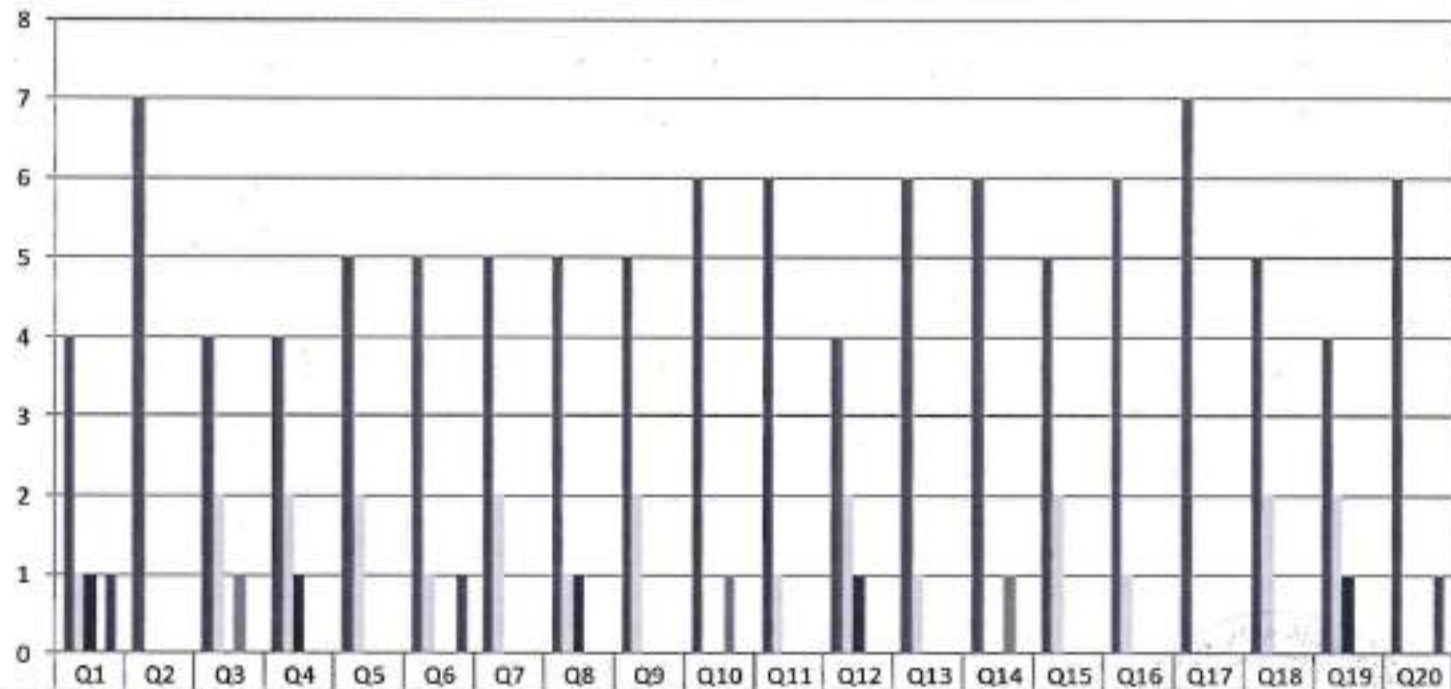
Gowrivakkam, Chennai-600073

Affiliated to University of Madras, ISO 9001:2015 Certified Institution

EMPLOYER FEEDBACK ON CURRICULUM, INFRASTRUCTURE FACILITIES & AMBIENCE OF THE INSTITUTION - 2019-2020

B.Sc. COMPUTER SCIENCE

(NUMBER OF RESPONDENTS - 7)



B. K. Ganesan
PRINCIPAL
 PRINCE SHRI VENKATESHWARA
 ARTS AND SCIENCE COLLEGE
 GOWRIVAKKAM, CHENNAI-600 073.



PRINCE SHRI VENKATESWARA ARTS AND SCIENCE COLLEGE

Gowrivakkam, Chennai-600073.

Affiliated to University of Madras, ISO 9001:2015 Certified Institution

EMPLOYER FEEDBACK ON CURRICULUM, INFRASTRUCTURE FACILITIES & AMBIENCE OF THE INSTITUTION – ANALYSIS REPORT

Academic Year 2019-20
Department B. Com-General
Number of Respondents 9

Feedback Rate: Strongly Agree (5), Agree (4), Neutral (3), Disagree (2), Strongly Disagree (1)

| S. No | Feedback on Curriculum, infrastructure facilities & ambience of the institution | 5 | 4 | 3 | 2 | 1 |
|-------|--|---|---|---|---|---|
| 1 | Rate the students of PSVASC on general communication skills. (Related to Academic process and performance of students) | 6 | 3 | 0 | 0 | 0 |
| 2 | Rate the students of PSVASC on developing practical solutions to work place problems (Related to Academic process and performance of students) | 8 | 0 | 0 | 0 | 1 |
| 3 | Rate the students of PSVASC on working as a team (Related to Academic process and performance of students) | 7 | 1 | 1 | 0 | 0 |
| 4 | Rate the students of PSVASC on taking appropriate level of responsibility (Related to Academic process and performance of students) | 8 | 1 | 0 | 0 | 0 |
| 5 | Rate the students of PSVASC on Time Management (Related to Academic process and performance of students) | 8 | 1 | 0 | 0 | 0 |
| 6 | Rate the students of PSVASC on Decision Making (Related to Academic process and performance of students) | 6 | 3 | 0 | 0 | 0 |
| 7 | Rate the students of PSVASC on response to workplace challenges (Related to Academic process and performance of students) | 6 | 2 | 0 | 1 | 0 |



PRINCE SHRI VENKATESWARA ARTS AND SCIENCE COLLEGE

Gowrivakkam, Chennai-600073.

Affiliated to University of Madras, ISO 9001:2015 Certified Institution

| | | | | | | |
|----|---|---|---|---|---|---|
| 8 | Rate the student's ability to contribute for reaching the goal of organization (Related to Academic process and performance of students) | 8 | 1 | 0 | 0 | 0 |
| 9 | Rate the students of PSVASC on technical knowledge and skills (Related to Academic process and performance of students) | 7 | 2 | 0 | 0 | 0 |
| 10 | Rate the students of PSVASC on leadership quality and taking up responsibilities (Related to Academic process and performance of students) | 7 | 2 | 0 | 0 | 0 |
| 11 | Rate the students of PSVASC on relationship with seniors / peers / subordinates and work ethics (Related to Academic process and performance of students) | 9 | 0 | 0 | 0 | 0 |
| 12 | Rate students of PSVASC on Creativity and Innovations. (Related to Academic process and performance of students) | 7 | 1 | 1 | 0 | 0 |
| 13 | Rate the students of PSVASC on lifelong learning and technology adaptability (Related to Academic process and performance of students) | 8 | 1 | 0 | 0 | 0 |
| 14 | Rate students of PSVASC on sustainability, environment awareness and social activities (Related to Academic process and performance of students) | 6 | 2 | 0 | 1 | 0 |
| 15 | Rate the learning ambience of the institution (Related to ambience of the institution) | 7 | 2 | 0 | 0 | 0 |
| 16 | Rate the functioning of Placement Cell (Related to ambience of the institution) | 8 | 0 | 1 | 0 | 0 |
| 17 | Rate the laboratory and research facilities of the institution (Related to infrastructure facility of the institution) | 7 | 1 | 0 | 0 | 1 |
| 18 | Rate the infrastructure facility of the institution to organize Pool Campus (Related to infrastructure facility of the institution) | 9 | 0 | 0 | 0 | 0 |
| 19 | Rate the WIFI facility with adequate bandwidth provided by the institution (Related to infrastructure facility of the institution) | 7 | 2 | 0 | 0 | 0 |
| 20 | Rate the overall impression of the institution (Related to infrastructure facility of the institution) | 9 | 0 | 0 | 0 | 0 |



B. Kalpana
PRINCIPAL
PRINCE SHRI VENKATESHWARA
ARTS AND SCIENCE COLLEGE
GOWRIVAKKAM, CHENNAI-600 073



PRINCE SHRI VENKATESWARA ARTS AND SCIENCE COLLEGE

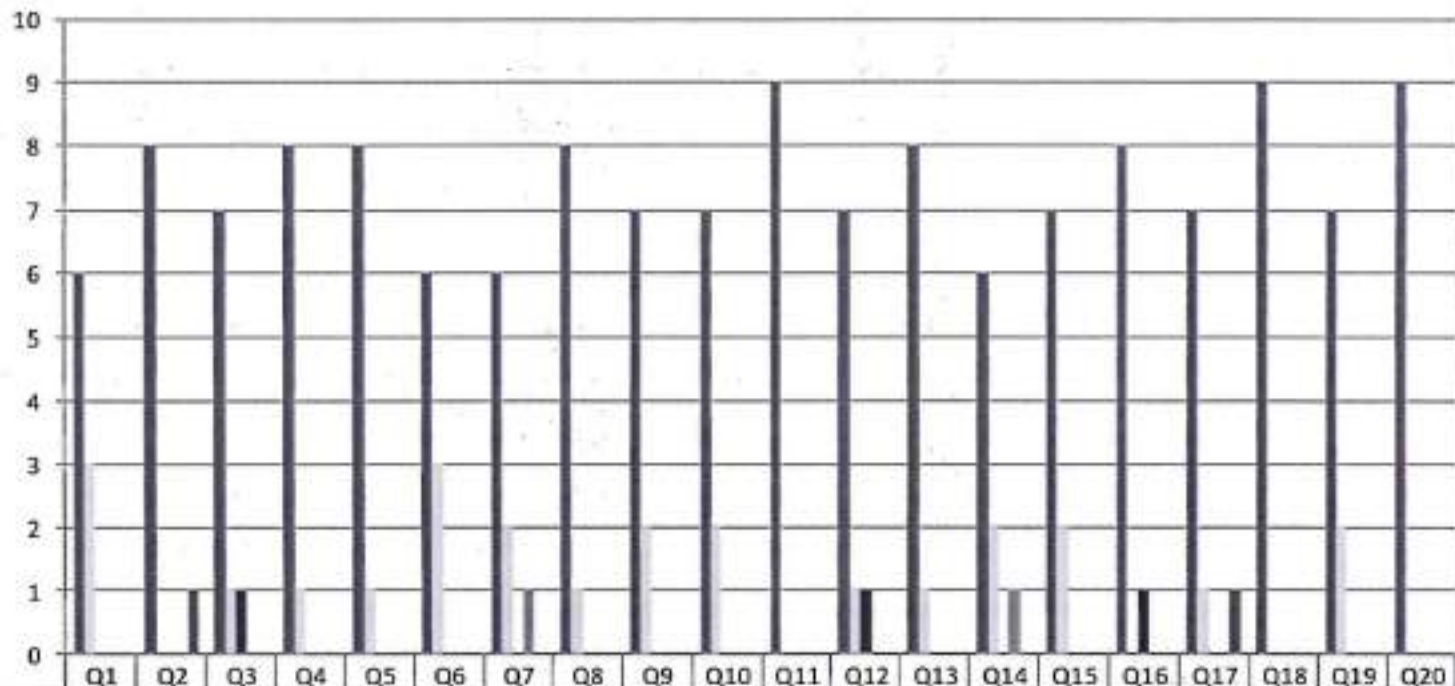
Gowrivakkam, Chennai-600073

Affiliated to University of Madras, ISO 9001:2015 Certified Institution

**EMPLOYER FEEDBACK ON CURRICULUM, INFRASTRUCTURE
FACILITIES & AMBIENCE OF THE INSTITUTION - 2019-2020**

B.COM (GENERAL)

(NUMBER OF RESPONDENTS - 9)



| | | | | | | | | | | | | | | | | | | | | |
|-----------------------|---|---|---|---|---|---|---|---|---|---|---|---|---|---|---|---|---|---|---|---|
| Strongly Agree (5) | 6 | 8 | 7 | 8 | 8 | 6 | 6 | 8 | 7 | 7 | 9 | 7 | 8 | 6 | 7 | 8 | 7 | 9 | 7 | 9 |
| Agree (4) | 3 | 0 | 1 | 1 | 1 | 3 | 2 | 1 | 2 | 2 | 0 | 1 | 1 | 2 | 2 | 0 | 1 | 0 | 2 | 0 |
| Neutral (3) | 0 | 0 | 1 | 0 | 0 | 0 | 0 | 0 | 0 | 0 | 0 | 1 | 0 | 0 | 0 | 1 | 0 | 0 | 0 | 0 |
| Disagree (2) | 0 | 0 | 0 | 0 | 0 | 0 | 1 | 0 | 0 | 0 | 0 | 0 | 0 | 1 | 0 | 0 | 0 | 0 | 0 | 0 |
| Strongly Disagree (1) | 0 | 1 | 0 | 0 | 0 | 0 | 0 | 0 | 0 | 0 | 0 | 0 | 0 | 0 | 0 | 0 | 0 | 0 | 0 | 0 |



**PRINCE SHRI VENKATESHWARA
ARTS AND SCIENCE COLLEGE
GOWRIVAKKAM, CHENNAI-600 073**

Kadpana
PRINCIPAL



PRINCE SHRI VENKATESWARA ARTS AND SCIENCE COLLEGE

Gowrivakkam, Chennai-600073

Affiliated to University of Madras, ISO 9001:2015 Certified Institution

EMPLOYER FEEDBACK ON CURRICULUM, INFRASTRUCTURE FACILITIES & AMBIENCE OF THE INSTITUTION – ANALYSIS REPORT

Academic Year 2019-20

Department BCA

Number of Respondents 6

Feedback Rate: Strongly Agree (5), Agree (4), Neutral (3), Disagree (2), Strongly Disagree (1)

| S. No | Feedback on Curriculum, infrastructure facilities & ambience of the institution | 5 | 4 | 3 | 2 | 1 |
|-------|--|---|---|---|---|---|
| 1 | Rate the students of PSVASC on general communication skills. (Related to Academic process and performance of students) | 4 | 1 | 0 | 0 | 1 |
| 2 | Rate the students of PSVASC on developing practical solutions to work place problems (Related to Academic process and performance of students) | 5 | 0 | 1 | 0 | 0 |
| 3 | Rate the students of PSVASC on working as a team (Related to Academic process and performance of students) | 6 | 0 | 0 | 0 | 0 |
| 4 | Rate the students of PSVASC on taking appropriate level of responsibility (Related to Academic process and performance of students) | 4 | 2 | 0 | 0 | 0 |
| 5 | Rate the students of PSVASC on Time Management (Related to Academic process and performance of students) | 5 | 0 | 0 | 1 | 0 |
| 6 | Rate the students of PSVASC on Decision Making (Related to Academic process and performance of students) | 3 | 3 | 0 | 0 | 0 |
| 7 | Rate the students of PSVASC on response to workplace challenges (Related to Academic process and performance of students) | 3 | 3 | 0 | 0 | 0 |
| 8 | Rate the student's ability to contribute for reaching the goal of organization (Related to Academic process and performance of students) | 5 | 1 | 0 | 0 | 0 |



PRINCE SHRI VENKATESWARA ARTS AND SCIENCE COLLEGE

Gowrivakkam, Chennai-600073

Affiliated to University of Madras, ISO 9001:2015 Certified Institution

| | | | | | | |
|----|---|---|---|---|---|---|
| 9 | Rate the students of PSVASC on technical knowledge and skills (Related to Academic process and performance of students) | 4 | 1 | 0 | 0 | 1 |
| 10 | Rate the students of PSVASC on leadership quality and taking up responsibilities (Related to Academic process and performance of students) | 3 | 3 | 0 | 0 | 0 |
| 11 | Rate the students of PSVASC on relationship with seniors / peers / subordinates and work ethics (Related to Academic process and performance of students) | 5 | 0 | 1 | 0 | 0 |
| 12 | Rate students of PSVASC on Creativity and Innovations. (Related to Academic process and performance of students) | 5 | 1 | 0 | 0 | 0 |
| 13 | Rate the students of PSVASC on lifelong learning and technology adaptability (Related to Academic process and performance of students) | 3 | 3 | 0 | 0 | 0 |
| 14 | Rate students of PSVASC on sustainability, environment awareness and social activities (Related to Academic process and performance of students) | 4 | 2 | 0 | 0 | 0 |
| 15 | Rate the learning ambience of the institution (Related to ambience of the institution) | 5 | 0 | 1 | 0 | 0 |
| 16 | Rate the functioning of Placement Cell (Related to ambience of the institution) | 4 | 2 | 0 | 0 | 0 |
| 17 | Rate the laboratory and research facilities of the institution (Related to infrastructure facility of the institution) | 3 | 2 | 1 | 0 | 0 |
| 18 | Rate the infrastructure facility of the institution to organize Pool Campus (Related to infrastructure facility of the institution) | 3 | 3 | 0 | 0 | 0 |
| 19 | Rate the WIFI facility with adequate bandwidth provided by the institution (Related to infrastructure facility of the institution) | 4 | 1 | 0 | 1 | 0 |
| 20 | Rate the overall impression of the institution (Related to infrastructure facility of the institution) | 6 | 0 | 0 | 0 | 0 |



B. Kalpana
PRINCIPAL
PRINCE SHRI VENKATESHWARA
ARTS AND SCIENCE COLLEGE
GOWRIVAKKAM, CHENNAI-600 073



PRINCE SHRI VENKATESWARA ARTS AND SCIENCE COLLEGE

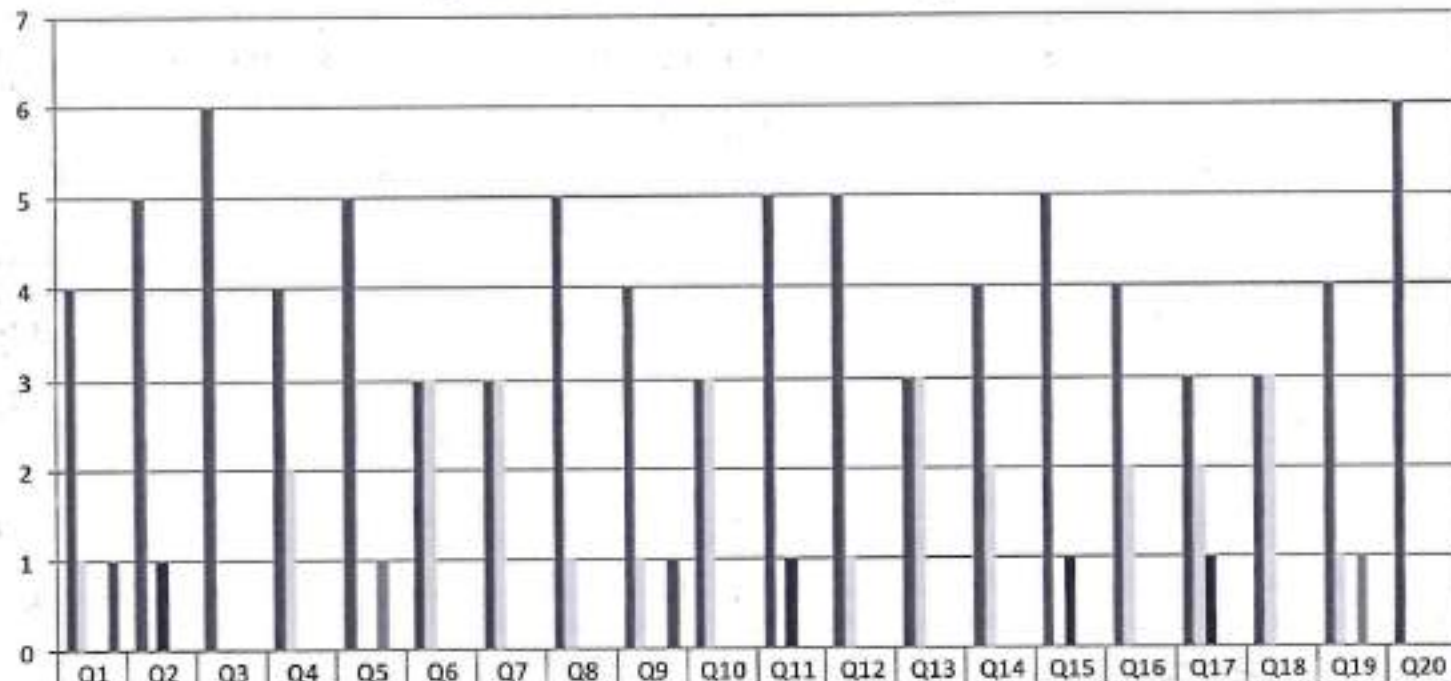
Gowrivakkam, Chennai-600073.

Affiliated to University of Madras, ISO 9001:2015 Certified Institution.

**EMPLOYER FEEDBACK ON CURRICULUM, INFRASTRUCTURE
FACILITIES & AMBIENCE OF THE INSTITUTION - 2019-2020**

BCA

(NUMBER OF RESPONDENTS - 6)



| | Q1 | Q2 | Q3 | Q4 | Q5 | Q6 | Q7 | Q8 | Q9 | Q10 | Q11 | Q12 | Q13 | Q14 | Q15 | Q16 | Q17 | Q18 | Q19 | Q20 |
|-----------------------|----|----|----|----|----|----|----|----|----|-----|-----|-----|-----|-----|-----|-----|-----|-----|-----|-----|
| Strongly Agree (5) | 4 | 5 | 6 | 4 | 5 | 3 | 3 | 5 | 4 | 3 | 5 | 5 | 3 | 4 | 5 | 4 | 3 | 3 | 4 | 6 |
| Agree (4) | 1 | 0 | 0 | 2 | 0 | 3 | 3 | 1 | 1 | 3 | 0 | 1 | 3 | 2 | 0 | 2 | 2 | 3 | 1 | 0 |
| Neutral (3) | 0 | 1 | 0 | 0 | 0 | 0 | 0 | 0 | 0 | 0 | 1 | 0 | 0 | 0 | 1 | 0 | 1 | 0 | 0 | 0 |
| Disagree (2) | 0 | 0 | 0 | 0 | 1 | 0 | 0 | 0 | 0 | 0 | 0 | 0 | 0 | 0 | 0 | 0 | 0 | 0 | 0 | 0 |
| Strongly Disagree (1) | 1 | 0 | 0 | 0 | 0 | 0 | 0 | 0 | 1 | 0 | 0 | 0 | 0 | 0 | 0 | 0 | 0 | 0 | 0 | 0 |



B. Kalpana
PRINCIPAL
PRINCE SHRI VENKATESHWARA
ARTS AND SCIENCE COLLEGE
GOWRIVAKKAM, CHENNAI-600 073



PRINCE SHRI VENKATESWARA ARTS AND SCIENCE COLLEGE

Gowrivaikam, Chennai-600073.

Affiliated to University of Madras, ISO 9001:2015 Certified Institution

EMPLOYER FEEDBACK ON CURRICULUM, INFRASTRUCTURE FACILITIES & AMBIENCE OF THE INSTITUTION – ANALYSIS REPORT

Academic Year

2019-20

Department

B.Sc.-Biotechnology

Number of Respondents

6

Feedback Rate: Strongly Agree (5), Agree (4), Neutral (3), Disagree (2), Strongly Disagree (1)

| S. No | Feedback on Curriculum, infrastructure facilities & ambience of the institution | 5 | 4 | 3 | 2 | 1 |
|-------|--|---|---|---|---|---|
| 1 | Rate the students of PSVASC on general communication skills. (Related to Academic process and performance of students) | 3 | 2 | 0 | 0 | 1 |
| 2 | Rate the students of PSVASC on developing practical solutions to work place problems (Related to Academic process and performance of students) | 4 | 1 | 1 | 0 | 0 |
| 3 | Rate the students of PSVASC on working as a team (Related to Academic process and performance of students) | 3 | 2 | 0 | 1 | 0 |
| 4 | Rate the students of PSVASC on taking appropriate level of responsibility (Related to Academic process and performance of students) | 4 | 2 | 0 | 0 | 0 |
| 5 | Rate the students of PSVASC on Time Management (Related to Academic process and performance of students) | 5 | 1 | 0 | 0 | 0 |
| 6 | Rate the students of PSVASC on Decision Making (Related to Academic process and performance of students) | 4 | 1 | 1 | 0 | 0 |
| 7 | Rate the students of PSVASC on response to workplace challenges (Related to Academic process and performance of students) | 3 | 2 | 0 | 0 | 1 |
| 8 | Rate the student's ability to contribute for reaching the goal of organization (Related to Academic process and performance of students) | 5 | 1 | 0 | 0 | 0 |



PRINCE SHRI VENKATESWARA ARTS AND SCIENCE COLLEGE

Gowrivakkam, Chennai-600073.

Affiliated to University of Madras, ISO 9001:2015 Certified Institution.

| | | | | | | |
|----|---|---|---|---|---|---|
| 9 | Rate the students of PSVASC on technical knowledge and skills (Related to Academic process and performance of students) | 4 | 2 | 0 | 0 | 0 |
| 10 | Rate the students of PSVASC on leadership quality and taking up responsibilities (Related to Academic process and performance of students) | 4 | 1 | 1 | 0 | 0 |
| 11 | Rate the students of PSVASC on relationship with seniors / peers / subordinates and work ethics (Related to Academic process and performance of students) | 5 | 1 | 0 | 0 | 0 |
| 12 | Rate students of PSVASC on Creativity and Innovations. (Related to Academic process and performance of students) | 3 | 3 | 0 | 0 | 0 |
| 13 | Rate the students of PSVASC on lifelong learning and technology adaptability (Related to Academic process and performance of students) | 4 | 1 | 0 | 1 | 0 |
| 14 | Rate students of PSVASC on sustainability, environment awareness and social activities (Related to Academic process and performance of students) | 4 | 2 | 0 | 0 | 0 |
| 15 | Rate the learning ambience of the institution (Related to ambience of the institution) | 5 | 1 | 0 | 0 | 0 |
| 16 | Rate the functioning of Placement Cell (Related to ambience of the institution) | 3 | 2 | 1 | 0 | 0 |
| 17 | Rate the laboratory and research facilities of the institution (Related to infrastructure facility of the institution) | 3 | 3 | 0 | 0 | 0 |
| 18 | Rate the infrastructure facility of the institution to organize Pool Campus (Related to infrastructure facility of the institution) | 4 | 1 | 0 | 1 | 0 |
| 19 | Rate the WIFI facility with adequate bandwidth provided by the institution (Related to infrastructure facility of the institution) | 3 | 2 | 0 | 0 | 1 |
| 20 | Rate the overall impression of the institution (Related to infrastructure facility of the institution) | 3 | 3 | 0 | 0 | 0 |



B. Kalpana
PRINCIPAL

PRINCE SHRI VENKATESHWARA
ARTS AND SCIENCE COLLEGE
GOWRIVAKKAM, CHENNAI-600 073



PRINCE SHRI VENKATESWARA ARTS AND SCIENCE COLLEGE

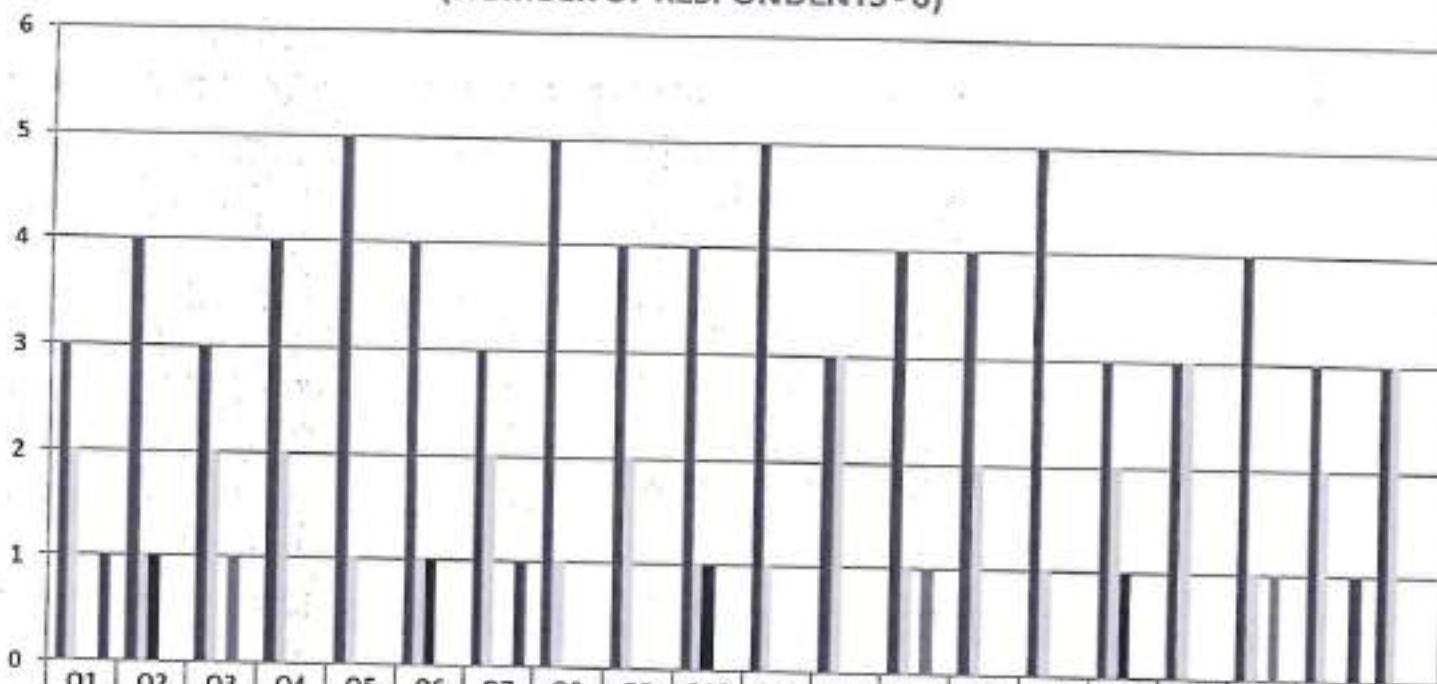
Gowrivaldam, Chennai-600073

Affiliated to University of Madras, ISO 9001:2015 Certified Institution

EMPLOYER FEEDBACK ON CURRICULUM, INFRASTRUCTURE FACILITIES & AMBIENCE OF THE INSTITUTION - 2019-2020

B.Sc. BIOTECHNOLOGY

(NUMBER OF RESPONDENTS - 6)



B. Kalpana
PRINCIPAL
 PRINCE SHRI VENKATESHWARA
 ARTS AND SCIENCE COLLEGE



PRINCE SHRI VENKATESWARA ARTS AND SCIENCE COLLEGE

Gowrivakkam, Chennai-600073

Affiliated to University of Madras, ISO 9001:2015 Certified Institution

EMPLOYER FEEDBACK ON CURRICULUM, INFRASTRUCTURE FACILITIES & AMBIENCE OF THE INSTITUTION – ANALYSIS REPORT

Academic Year

2019-20

Department

B. Com - Accounting and Finance

Number of Respondents

8

Feedback Rate: Strongly Agree (5), Agree (4), Neutral (3), Disagree (2), Strongly Disagree (1)

| S. No | Feedback on Curriculum, infrastructure facilities & ambience of the institution | 5 | 4 | 3 | 2 | 1 |
|-------|--|---|---|---|---|---|
| 1 | Rate the students of PSVASC on general communication skills. (Related to Academic process and performance of students) | 6 | 1 | 0 | 0 | 1 |
| 2 | Rate the students of PSVASC on developing practical solutions to work place problems (Related to Academic process and performance of students) | 5 | 2 | 1 | 0 | 0 |
| 3 | Rate the students of PSVASC on working as a team (Related to Academic process and performance of students) | 6 | 1 | 0 | 1 | 0 |
| 4 | Rate the students of PSVASC on taking appropriate level of responsibility (Related to Academic process and performance of students) | 6 | 2 | 0 | 0 | 0 |
| 5 | Rate the students of PSVASC on Time Management (Related to Academic process and performance of students) | 6 | 1 | 1 | 0 | 0 |
| 6 | Rate the students of PSVASC on Decision Making (Related to Academic process and performance of students) | 7 | 0 | 1 | 0 | 0 |
| 7 | Rate the students of PSVASC on response to workplace challenges (Related to Academic process and performance of students) | 5 | 2 | 0 | 0 | 1 |
| 8 | Rate the student's ability to contribute for reaching the goal of organization (Related to Academic process and performance of students) | 5 | 1 | 1 | 1 | 0 |



PRINCE SHRI VENKATESWARA ARTS AND SCIENCE COLLEGE

Gowrivakkam, Chennai-600073.

Affiliated to University of Madras, ISO 9001:2015 Certified Institution

| | | | | | | |
|----|---|---|---|---|---|---|
| 9 | Rate the students of PSVASC on technical knowledge and skills (Related to Academic process and performance of students) | 8 | 0 | 0 | 0 | 0 |
| 10 | Rate the students of PSVASC on leadership quality and taking up responsibilities (Related to Academic process and performance of students) | 6 | 1 | 1 | 0 | 0 |
| 11 | Rate the students of PSVASC on relationship with seniors / peers / subordinates and work ethics (Related to Academic process and performance of students) | 5 | 3 | 0 | 0 | 0 |
| 12 | Rate students of PSVASC on Creativity and Innovations. (Related to Academic process and performance of students) | 7 | 1 | 0 | 0 | 0 |
| 13 | Rate the students of PSVASC on lifelong learning and technology adaptability (Related to Academic process and performance of students) | 6 | 1 | 0 | 1 | 0 |
| 14 | Rate students of PSVASC on sustainability, environment awareness and social activities (Related to Academic process and performance of students) | 8 | 0 | 0 | 0 | 0 |
| 15 | Rate the learning ambience of the institution (Related to ambience of the institution) | 7 | 1 | 0 | 0 | 0 |
| 16 | Rate the functioning of Placement Cell (Related to ambience of the institution) | 6 | 1 | 1 | 0 | 0 |
| 17 | Rate the laboratory and research facilities of the institution (Related to infrastructure facility of the institution) | 6 | 2 | 0 | 0 | 0 |
| 18 | Rate the infrastructure facility of the institution to organize Pool Campus (Related to infrastructure facility of the institution) | 7 | 0 | 0 | 1 | 0 |
| 19 | Rate the WIFI facility with adequate bandwidth provided by the institution (Related to infrastructure facility of the institution) | 7 | 0 | 0 | 0 | 1 |
| 20 | Rate the overall impression of the institution (Related to infrastructure facility of the institution) | 7 | 1 | 0 | 0 | 0 |



B. Kalpana
PRINCIPAL
PRINCE SHRI VENKATESHWARA
ARTS AND SCIENCE COLLEGE
GOWRIVAKKAM, CHENNAI-600 073.

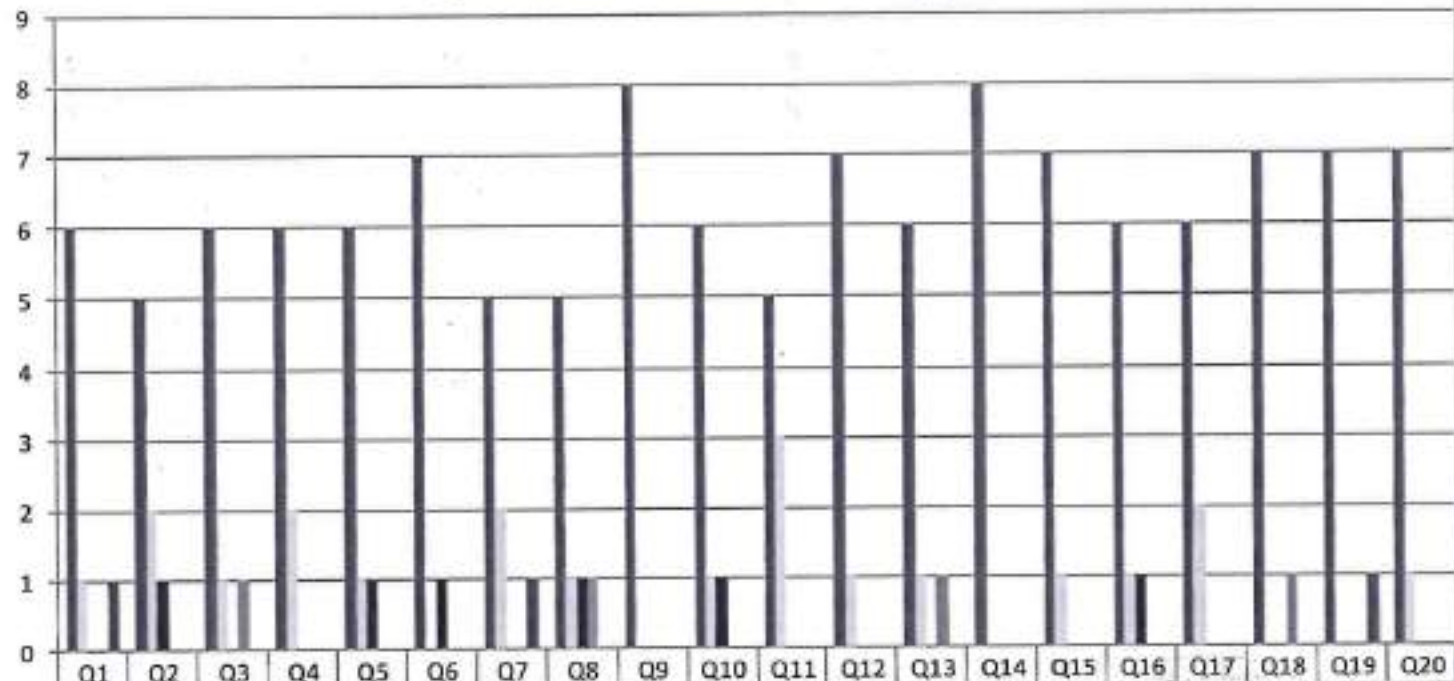


PRINCE SHRI VENKATESWARA ARTS AND SCIENCE COLLEGE

Gowrivaldkam, Chennai-600073.

Affiliated to University of Madras, ISO 9001:2015 Certified Institution

**EMPLOYER FEEDBACK ON CURRICULUM, INFRASTRUCTURE
FACILITIES & AMBIENCE OF THE INSTITUTION - 2019-2020
B.COM (ACCOUNTING AND FINANCE)
(NUMBER OF RESPONDENTS - 8)**



B. Kalpana
PRINCIPAL
PRINCE SHRI VENKATESHWARA
ARTS AND SCIENCE COLLEGE
GOWRIVAKKAM, CHENNAI-600 073.



PRINCE SHRI VENKATESWARA ARTS AND SCIENCE COLLEGE

Gowrivaldkam, Chennai-600073

Affiliated to University of Madras, ISO 9001:2015 Certified Institution.

EMPLOYER FEEDBACK ON CURRICULUM, INFRASTRUCTURE FACILITIES & AMBIENCE OF THE INSTITUTION – ANALYSIS REPORT

Academic Year 2019-20
Department B.A. English
Number of Respondents 6

Feedback Rate: Strongly Agree (5), Agree (4), Neutral (3), Disagree (2), Strongly Disagree (1)

| S. No | Feedback on Curriculum, infrastructure facilities & ambience of the institution | 5 | 4 | 3 | 2 | 1 |
|-------|--|---|---|---|---|---|
| 1 | Rate the students of PSVASC on general communication skills. (Related to Academic process and performance of students) | 4 | 1 | 0 | 0 | 1 |
| 2 | Rate the students of PSVASC on developing practical solutions to work place problems (Related to Academic process and performance of students) | 5 | 0 | 1 | 0 | 0 |
| 3 | Rate the students of PSVASC on working as a team (Related to Academic process and performance of students) | 4 | 1 | 0 | 1 | 0 |
| 4 | Rate the students of PSVASC on taking appropriate level of responsibility (Related to Academic process and performance of students) | 5 | 1 | 0 | 0 | 0 |
| 5 | Rate the students of PSVASC on Time Management (Related to Academic process and performance of students) | 4 | 0 | 2 | 0 | 0 |
| 6 | Rate the students of PSVASC on Decision Making (Related to Academic process and performance of students) | 5 | 0 | 1 | 0 | 0 |
| 7 | Rate the students of PSVASC on response to workplace challenges (Related to Academic process and performance of students) | 4 | 1 | 0 | 0 | 1 |
| 8 | Rate the student's ability to contribute for reaching the goal of organization (Related to Academic process and performance of students) | 4 | 0 | 1 | 1 | 0 |



PRINCE SHRI VENKATESWARA ARTS AND SCIENCE COLLEGE

Gowrivaldkam, Chennai-600073.

Affiliated to University of Madras, ISO 9001:2015 Certified Institution.

| | | | | | | |
|----|---|---|---|---|---|---|
| 9 | Rate the students of PSVASC on technical knowledge and skills (Related to Academic process and performance of students) | 5 | 1 | 0 | 0 | 0 |
| 10 | Rate the students of PSVASC on leadership quality and taking up responsibilities (Related to Academic process and performance of students) | 5 | 0 | 1 | 0 | 0 |
| 11 | Rate the students of PSVASC on relationship with seniors / peers / subordinates and work ethics (Related to Academic process and performance of students) | 6 | 0 | 0 | 0 | 0 |
| 12 | Rate students of PSVASC on Creativity and Innovations. (Related to Academic process and performance of students) | 4 | 2 | 0 | 0 | 0 |
| 13 | Rate the students of PSVASC on lifelong learning and technology adaptability (Related to Academic process and performance of students) | 5 | 0 | 0 | 1 | 0 |
| 14 | Rate students of PSVASC on sustainability, environment awareness and social activities (Related to Academic process and performance of students) | 5 | 1 | 0 | 0 | 0 |
| 15 | Rate the learning ambience of the institution (Related to ambience of the institution) | 6 | 0 | 0 | 0 | 0 |
| 16 | Rate the functioning of Placement Cell (Related to ambience of the institution) | 4 | 1 | 1 | 0 | 0 |
| 17 | Rate the laboratory and research facilities of the institution (Related to infrastructure facility of the institution) | 4 | 2 | 0 | 0 | 0 |
| 18 | Rate the infrastructure facility of the institution to organize Pool Campus (Related to infrastructure facility of the institution) | 5 | 0 | 0 | 1 | 0 |
| 19 | Rate the WIFI facility with adequate bandwidth provided by the institution (Related to infrastructure facility of the institution) | 4 | 1 | 0 | 0 | 1 |
| 20 | Rate the overall impression of the institution (Related to infrastructure facility of the institution) | 4 | 2 | 0 | 0 | 0 |



B. Kalpana
PRINCIPAL
PRINCE SHRI VENKATESHWARA
ARTS AND SCIENCE COLLEGE
GOWRIVALDKAM, CHENNAI-600 07



PRINCE SHRI VENKATESWARA ARTS AND SCIENCE COLLEGE

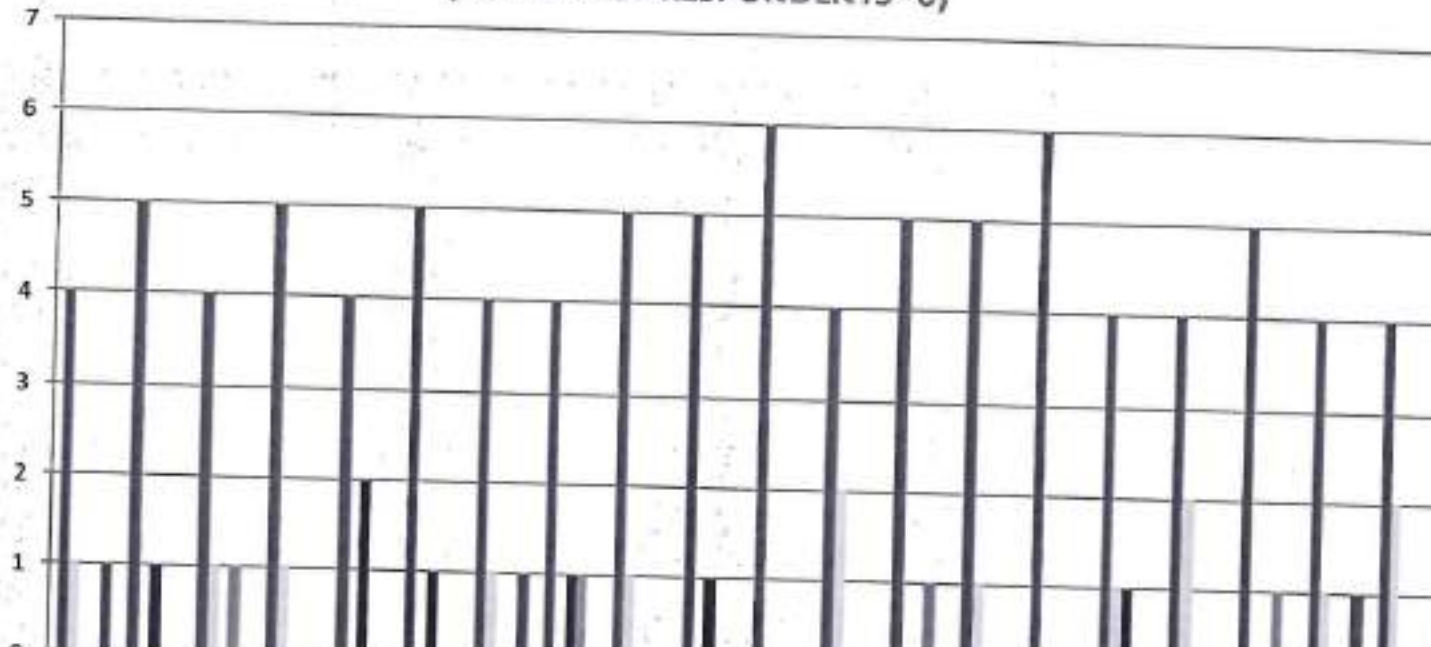
Gowrivaldam, Chennai-600073

Affiliated to University of Madras, ISO 9001:2015 Certified Institution

**EMPLOYER FEEDBACK ON CURRICULUM, INFRASTRUCTURE
FACILITIES & AMBIENCE OF THE INSTITUTION - 2019-2020**

B.A. ENGLISH

(NUMBER OF RESPONDENTS - 6)



| | Q1 | Q2 | Q3 | Q4 | Q5 | Q6 | Q7 | Q8 | Q9 | Q10 | Q11 | Q12 | Q13 | Q14 | Q15 | Q16 | Q17 | Q18 | Q19 | Q20 |
|-----------------------|----|----|----|----|----|----|----|----|----|-----|-----|-----|-----|-----|-----|-----|-----|-----|-----|-----|
| Strongly Agree (5) | 4 | 5 | 4 | 5 | 4 | 5 | 4 | 4 | 5 | 5 | 6 | 4 | 5 | 5 | 6 | 4 | 4 | 5 | 4 | 4 |
| Agree (4) | 1 | 0 | 1 | 1 | 0 | 0 | 1 | 0 | 1 | 0 | 0 | 2 | 0 | 1 | 0 | 1 | 2 | 0 | 1 | 2 |
| Neutral (3) | 0 | 1 | 0 | 0 | 2 | 1 | 0 | 1 | 0 | 1 | 0 | 0 | 0 | 0 | 0 | 1 | 0 | 0 | 0 | 0 |
| Disagree (2) | 0 | 0 | 1 | 0 | 0 | 0 | 0 | 1 | 0 | 0 | 0 | 0 | 1 | 0 | 0 | 0 | 0 | 0 | 0 | 0 |
| Strongly Disagree (1) | 1 | 0 | 0 | 0 | 0 | 0 | 1 | 0 | 0 | 0 | 0 | 0 | 0 | 0 | 0 | 0 | 0 | 0 | 0 | 0 |



R. K. K...
PRINCIPAL
PRINCE SHRI VENKATESHWARA
ARTS AND SCIENCE COLLEGE



PRINCE SHRI VENKATESWARA ARTS AND SCIENCE COLLEGE

Gowrivakkam, Chennai-600073

Affiliated to University of Madras, ISO 9001:2015 Certified Institution.

EMPLOYER FEEDBACK ON CURRICULUM, INFRASTRUCTURE FACILITIES & AMBIENCE OF THE INSTITUTION – ANALYSIS REPORT

Academic Year **2019-20**
Department **M.Sc. Microbiology**
Number of Respondents **5**

Feedback Rate: Strongly Agree (5), Agree (4), Neutral (3), Disagree (2), Strongly Disagree (1)

| S. No | Feedback on Curriculum, infrastructure facilities & ambience of the institution | 5 | 4 | 3 | 2 | 1 |
|-------|--|---|---|---|---|---|
| 1 | Rate the students of PSVASC on general communication skills. (Related to Academic process and performance of students) | 2 | 2 | 0 | 0 | 1 |
| 2 | Rate the students of PSVASC on developing practical solutions to work place problems (Related to Academic process and performance of students) | 2 | 3 | 0 | 0 | 0 |
| 3 | Rate the students of PSVASC on working as a team (Related to Academic process and performance of students) | 3 | 2 | 0 | 0 | 0 |
| 4 | Rate the students of PSVASC on taking appropriate level of responsibility (Related to Academic process and performance of students) | 2 | 3 | 0 | 0 | 0 |
| 5 | Rate the students of PSVASC on Time Management (Related to Academic process and performance of students) | 4 | 1 | 0 | 0 | 0 |
| 6 | Rate the students of PSVASC on Decision Making (Related to Academic process and performance of students) | 3 | 2 | 0 | 0 | 0 |
| 7 | Rate the students of PSVASC on response to workplace challenges (Related to Academic process and performance of students) | 2 | 3 | 0 | 0 | 0 |
| 8 | Rate the student's ability to contribute for reaching the goal of organization (Related to Academic process and performance of students) | 3 | 1 | 0 | 1 | 0 |



PRINCE SHRI VENKATESWARA ARTS AND SCIENCE COLLEGE

Gowrivakkam, Chennai-600073

Affiliated to University of Madras, ISO 9001:2015 Certified Institution

| | | | | | | |
|----|---|---|---|---|---|---|
| 9 | Rate the students of PSVASC on technical knowledge and skills (Related to Academic process and performance of students) | 4 | 1 | 0 | 0 | 0 |
| 10 | Rate the students of PSVASC on leadership quality and taking up responsibilities (Related to Academic process and performance of students) | 4 | 1 | 0 | 0 | 0 |
| 11 | Rate the students of PSVASC on relationship with seniors / peers / subordinates and work ethics (Related to Academic process and performance of students) | 3 | 2 | 0 | 0 | 0 |
| 12 | Rate students of PSVASC on Creativity and Innovations. (Related to Academic process and performance of students) | 3 | 1 | 0 | 1 | 0 |
| 13 | Rate the students of PSVASC on lifelong learning and technology adaptability (Related to Academic process and performance of students) | 3 | 1 | 1 | 0 | 0 |
| 14 | Rate students of PSVASC on sustainability, environment awareness and social activities (Related to Academic process and performance of students) | 3 | 2 | 0 | 0 | 0 |
| 15 | Rate the learning ambience of the institution (Related to ambience of the institution) | 4 | 1 | 0 | 0 | 0 |
| 16 | Rate the functioning of Placement Cell (Related to ambience of the institution) | 4 | 1 | 0 | 0 | 0 |
| 17 | Rate the laboratory and research facilities of the institution (Related to infrastructure facility of the institution) | 4 | 1 | 0 | 0 | 0 |
| 18 | Rate the infrastructure facility of the institution to organize Pool Campus (Related to infrastructure facility of the institution) | 3 | 1 | 0 | 0 | 1 |
| 19 | Rate the WIFI facility with adequate bandwidth provided by the institution (Related to infrastructure facility of the institution) | 3 | 2 | 0 | 0 | 0 |
| 20 | Rate the overall impression of the institution (Related to infrastructure facility of the institution) | 3 | 2 | 0 | 0 | 0 |



B. Kalpana
PRINCIPAL
PRINCE SHRI VENKATESHWARA
ARTS AND SCIENCE COLLEGE
GOWRIVAKKAM, CHENNAI-600 0



PRINCE SHRI VENKATESWARA ARTS AND SCIENCE COLLEGE

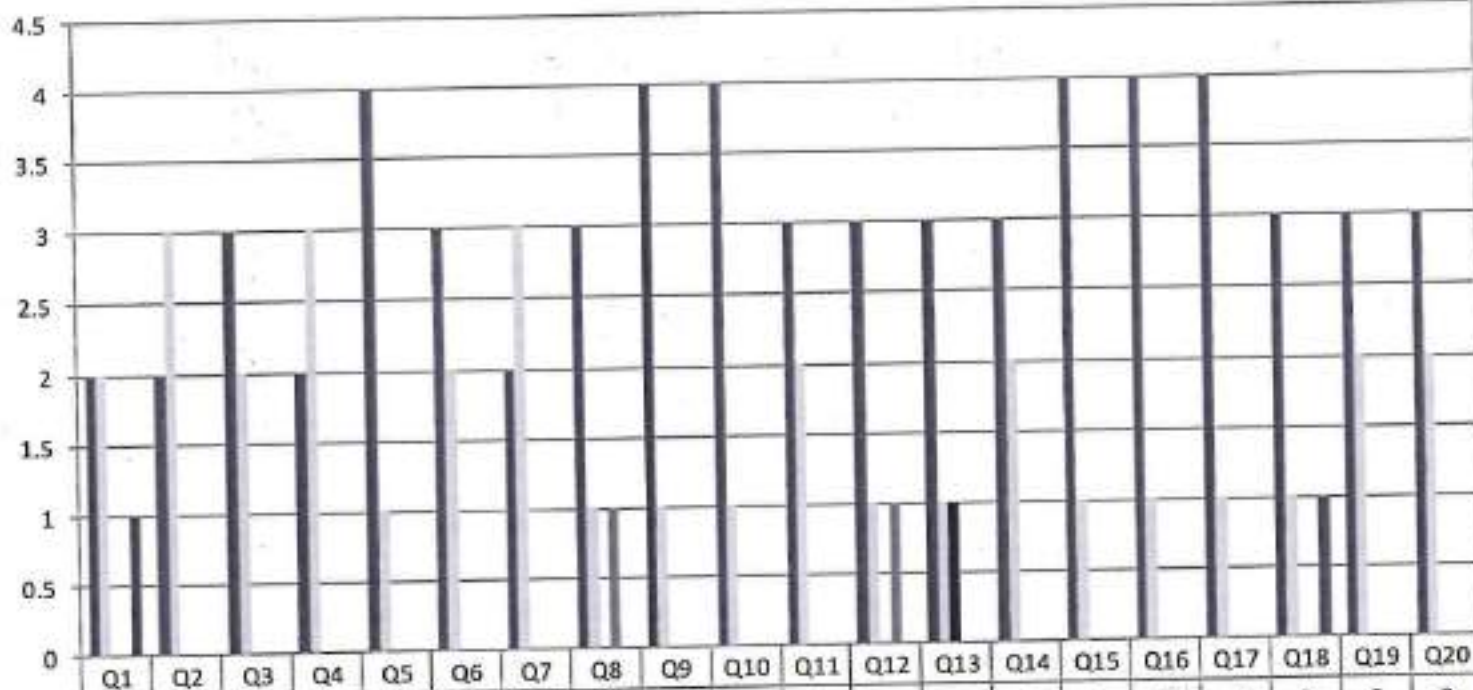
Gowrivakkam, Chennai-600073

Affiliated to University of Madras, ISO 9001:2015 Certified Institution

EMPLOYER FEEDBACK ON CURRICULUM, INFRASTRUCTURE FACILITIES & AMBIENCE OF THE INSTITUTION - 2019-2020

M.Sc. MICROBIOLOGY

(NUMBER OF RESPONDENTS - 5)



B. Kalpana
PRINCIPAL
PRINCE SHRI VENKATESHWARA
ARTS AND SCIENCE COLLEGE
GOWRIVAKKAM, CHENNAI-600 073.



PRINCE SHRI VENKATESWARA ARTS AND SCIENCE COLLEGE

Gowrivakkam, Chennai-600073.

Affiliated to University of Madras, ISO 9001:2015 Certified Institution.

EMPLOYER FEEDBACK ON CURRICULUM, INFRASTRUCTURE FACILITIES & AMBIENCE OF THE INSTITUTION – ANALYSIS REPORT

Academic Year **2019-20**
Department **M.Sc. Computer Science**
Number of Respondents **5**

Feedback Rate: Strongly Agree (5), Agree (4), Neutral (3), Disagree (2), Strongly Disagree (1)

| S. No | Feedback on Curriculum, infrastructure facilities & ambience of the institution | 5 | 4 | 3 | 2 | 1 |
|-------|--|---|---|---|---|---|
| 1 | Rate the students of PSVASC on general communication skills. (Related to Academic process and performance of students) | 2 | 1 | 1 | 0 | 1 |
| 2 | Rate the students of PSVASC on developing practical solutions to work place problems (Related to Academic process and performance of students) | 2 | 2 | 1 | 0 | 0 |
| 3 | Rate the students of PSVASC on working as a team (Related to Academic process and performance of students) | 3 | 1 | 1 | 0 | 0 |
| 4 | Rate the students of PSVASC on taking appropriate level of responsibility (Related to Academic process and performance of students) | 2 | 2 | 1 | 0 | 0 |
| 5 | Rate the students of PSVASC on Time Management (Related to Academic process and performance of students) | 4 | 0 | 1 | 0 | 0 |
| 6 | Rate the students of PSVASC on Decision Making (Related to Academic process and performance of students) | 3 | 1 | 1 | 0 | 0 |
| 7 | Rate the students of PSVASC on response to workplace challenges (Related to Academic process and performance of students) | 2 | 2 | 1 | 0 | 0 |
| 8 | Rate the student's ability to contribute for reaching the goal of organization (Related to Academic process and performance of students) | 3 | 0 | 1 | 1 | 0 |



PRINCE SHRI VENKATESWARA ARTS AND SCIENCE COLLEGE

Gowrivaikam, Chennai-600073.

Affiliated to University of Madras, ISO 9001:2015 Certified Institution

| | | | | | | |
|----|---|---|---|---|---|---|
| 9 | Rate the students of PSVASC on technical knowledge and skills (Related to Academic process and performance of students) | 4 | 0 | 1 | 0 | 0 |
| 10 | Rate the students of PSVASC on leadership quality and taking up responsibilities (Related to Academic process and performance of students) | 4 | 0 | 1 | 0 | 0 |
| 11 | Rate the students of PSVASC on relationship with seniors / peers / subordinates and work ethics (Related to Academic process and performance of students) | 3 | 1 | 1 | 0 | 0 |
| 12 | Rate students of PSVASC on Creativity and Innovations. (Related to Academic process and performance of students) | 3 | 0 | 1 | 1 | 0 |
| 13 | Rate the students of PSVASC on lifelong learning and technology adaptability (Related to Academic process and performance of students) | 3 | 0 | 2 | 0 | 0 |
| 14 | Rate students of PSVASC on sustainability, environment awareness and social activities (Related to Academic process and performance of students) | 3 | 1 | 1 | 0 | 0 |
| 15 | Rate the learning ambience of the institution (Related to ambience of the institution) | 4 | 0 | 1 | 0 | 0 |
| 16 | Rate the functioning of Placement Cell (Related to ambience of the institution) | 4 | 0 | 1 | 0 | 0 |
| 17 | Rate the laboratory and research facilities of the institution (Related to infrastructure facility of the institution) | 4 | 0 | 1 | 0 | 0 |
| 18 | Rate the infrastructure facility of the institution to organize Pool Campus (Related to infrastructure facility of the institution) | 3 | 0 | 1 | 0 | 1 |
| 19 | Rate the WIFI facility with adequate bandwidth provided by the institution (Related to infrastructure facility of the institution) | 3 | 1 | 1 | 0 | 0 |
| 20 | Rate the overall impression of the institution (Related to infrastructure facility of the institution) | 3 | 1 | 1 | 0 | 0 |



B. Kalpana
PRINCIPAL
PRINCE SHRI VENKATESHWARA
ARTS AND SCIENCE COLLEGE
GOWRIVAKKAM, CHENNAI-600 073



PRINCE SHRI VENKATESWARA ARTS AND SCIENCE COLLEGE

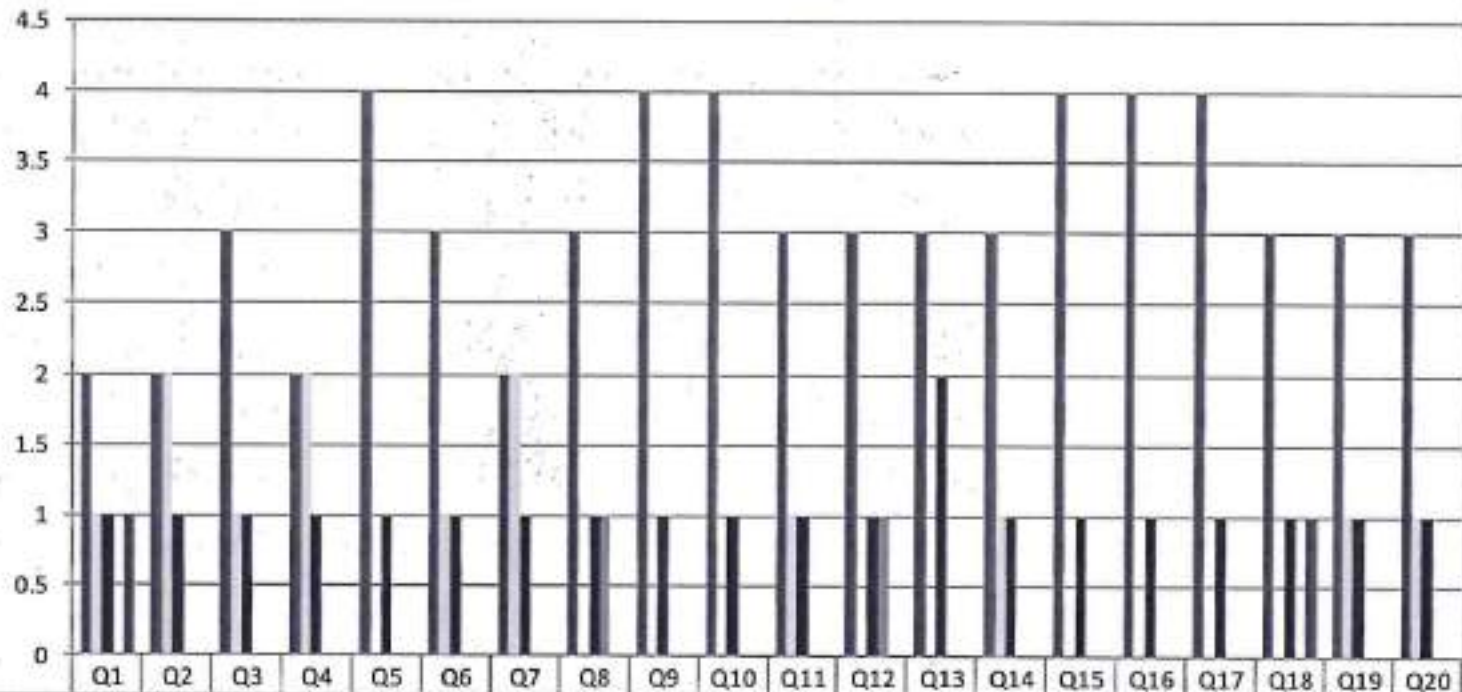
Gowrivakkam, Chennai-600073.

Affiliated to University of Madras, ISO 9001:2015 Certified Institution.

EMPLOYER FEEDBACK ON CURRICULUM, INFRASTRUCTURE FACILITIES & AMBIENCE OF THE INSTITUTION - 2019-2020

M.Sc. COMPUTER SCIENCE

(NUMBER OF RESPONDENTS - 5)



| | Q1 | Q2 | Q3 | Q4 | Q5 | Q6 | Q7 | Q8 | Q9 | Q10 | Q11 | Q12 | Q13 | Q14 | Q15 | Q16 | Q17 | Q18 | Q19 | Q20 |
|-----------------------|----|----|----|----|----|----|----|----|----|-----|-----|-----|-----|-----|-----|-----|-----|-----|-----|-----|
| Strongly Agree (5) | 2 | 2 | 3 | 2 | 4 | 3 | 2 | 3 | 4 | 4 | 3 | 3 | 3 | 3 | 4 | 4 | 4 | 3 | 3 | 3 |
| Agree (4) | 1 | 2 | 1 | 2 | 0 | 1 | 2 | 0 | 0 | 0 | 1 | 0 | 0 | 1 | 0 | 0 | 0 | 0 | 1 | 1 |
| Neutral (3) | 1 | 1 | 1 | 1 | 1 | 1 | 1 | 1 | 1 | 1 | 1 | 1 | 2 | 1 | 1 | 1 | 1 | 1 | 1 | 1 |
| Disagree (2) | 0 | 0 | 0 | 0 | 0 | 0 | 0 | 1 | 0 | 0 | 0 | 1 | 0 | 0 | 0 | 0 | 0 | 0 | 0 | 0 |
| Strongly Disagree (1) | 1 | 0 | 0 | 0 | 0 | 0 | 0 | 0 | 0 | 0 | 0 | 0 | 0 | 0 | 0 | 0 | 0 | 0 | 0 | 0 |



B. S. Prasad
PRINCIPAL
 PRINCE SHRI VENKATESHWARA
 ARTS AND SCIENCE COLLEGE
 GOWRIVAKKAM, CHENNAI-600 073.



PRINCE SHRI VENKATESWARA ARTS AND SCIENCE COLLEGE

Gowrivalkkam, Chennai-600073.

Affiliated to University of Madras, ISO 9001:2015 Certified Institution

EMPLOYER FEEDBACK ON CURRICULUM, INFRASTRUCTURE FACILITIES & AMBIENCE OF THE INSTITUTION – ANALYSIS REPORT

Academic Year 2019-20
Department M.Sc. Biochemistry
Number of Respondents 4

Feedback Rate: Strongly Agree (5), Agree (4), Neutral (3), Disagree (2), Strongly Disagree (1)

| S. No | Feedback on Curriculum, infrastructure facilities & ambience of the institution | 5 | 4 | 3 | 2 | 1 |
|-------|--|---|---|---|---|---|
| 1 | Rate the students of PSVASC on general communication skills. (Related to Academic process and performance of students) | 1 | 2 | 0 | 0 | 1 |
| 2 | Rate the students of PSVASC on developing practical solutions to work place problems (Related to Academic process and performance of students) | 1 | 3 | 0 | 0 | 0 |
| 3 | Rate the students of PSVASC on working as a team (Related to Academic process and performance of students) | 2 | 2 | 0 | 0 | 0 |
| 4 | Rate the students of PSVASC on taking appropriate level of responsibility (Related to Academic process and performance of students) | 1 | 3 | 0 | 0 | 0 |
| 5 | Rate the students of PSVASC on Time Management (Related to Academic process and performance of students) | 3 | 1 | 0 | 0 | 0 |
| 6 | Rate the students of PSVASC on Decision Making (Related to Academic process and performance of students) | 2 | 2 | 0 | 0 | 0 |
| 7 | Rate the students of PSVASC on response to workplace challenges (Related to Academic process and performance of students) | 1 | 3 | 0 | 0 | 0 |
| 8 | Rate the student's ability to contribute for reaching the goal of organization (Related to Academic process and performance of students) | 2 | 1 | 0 | 1 | 0 |



PRINCE SHRI VENKATESWARA ARTS AND SCIENCE COLLEGE

Gowrivakkam, Chennai-600073.

Affiliated to University of Madras, ISO 9001:2015 Certified Institution

| | | | | | | |
|----|---|---|---|---|---|---|
| 9 | Rate the students of PSVASC on technical knowledge and skills (Related to Academic process and performance of students) | 3 | 1 | 0 | 0 | 0 |
| 10 | Rate the students of PSVASC on leadership quality and taking up responsibilities (Related to Academic process and performance of students) | 3 | 1 | 0 | 0 | 0 |
| 11 | Rate the students of PSVASC on relationship with seniors / peers / subordinates and work ethics (Related to Academic process and performance of students) | 2 | 2 | 0 | 0 | 0 |
| 12 | Rate students of PSVASC on Creativity and Innovations. (Related to Academic process and performance of students) | 2 | 1 | 0 | 1 | 0 |
| 13 | Rate the students of PSVASC on lifelong learning and technology adaptability (Related to Academic process and performance of students) | 2 | 1 | 1 | 0 | 0 |
| 14 | Rate students of PSVASC on sustainability, environment awareness and social activities (Related to Academic process and performance of students) | 2 | 2 | 0 | 0 | 0 |
| 15 | Rate the learning ambience of the institution (Related to ambience of the institution) | 3 | 1 | 0 | 0 | 0 |
| 16 | Rate the functioning of Placement Cell (Related to ambience of the institution) | 3 | 1 | 0 | 0 | 0 |
| 17 | Rate the laboratory and research facilities of the institution (Related to infrastructure facility of the institution) | 3 | 1 | 0 | 0 | 0 |
| 18 | Rate the infrastructure facility of the institution to organize Pool Campus (Related to infrastructure facility of the institution) | 2 | 1 | 0 | 0 | 1 |
| 19 | Rate the WIFI facility with adequate bandwidth provided by the institution (Related to infrastructure facility of the institution) | 2 | 2 | 0 | 0 | 0 |
| 20 | Rate the overall impression of the institution (Related to infrastructure facility of the institution) | 2 | 2 | 0 | 0 | 0 |



B. Kalpana
PRINCIPAL

PRINCE SHRI VENKATESHWARA
ARTS AND SCIENCE COLLEGE
GOWRIVAKKAM, CHENNAI-600 073.



PRINCE SHRI VENKATESWARA ARTS AND SCIENCE COLLEGE

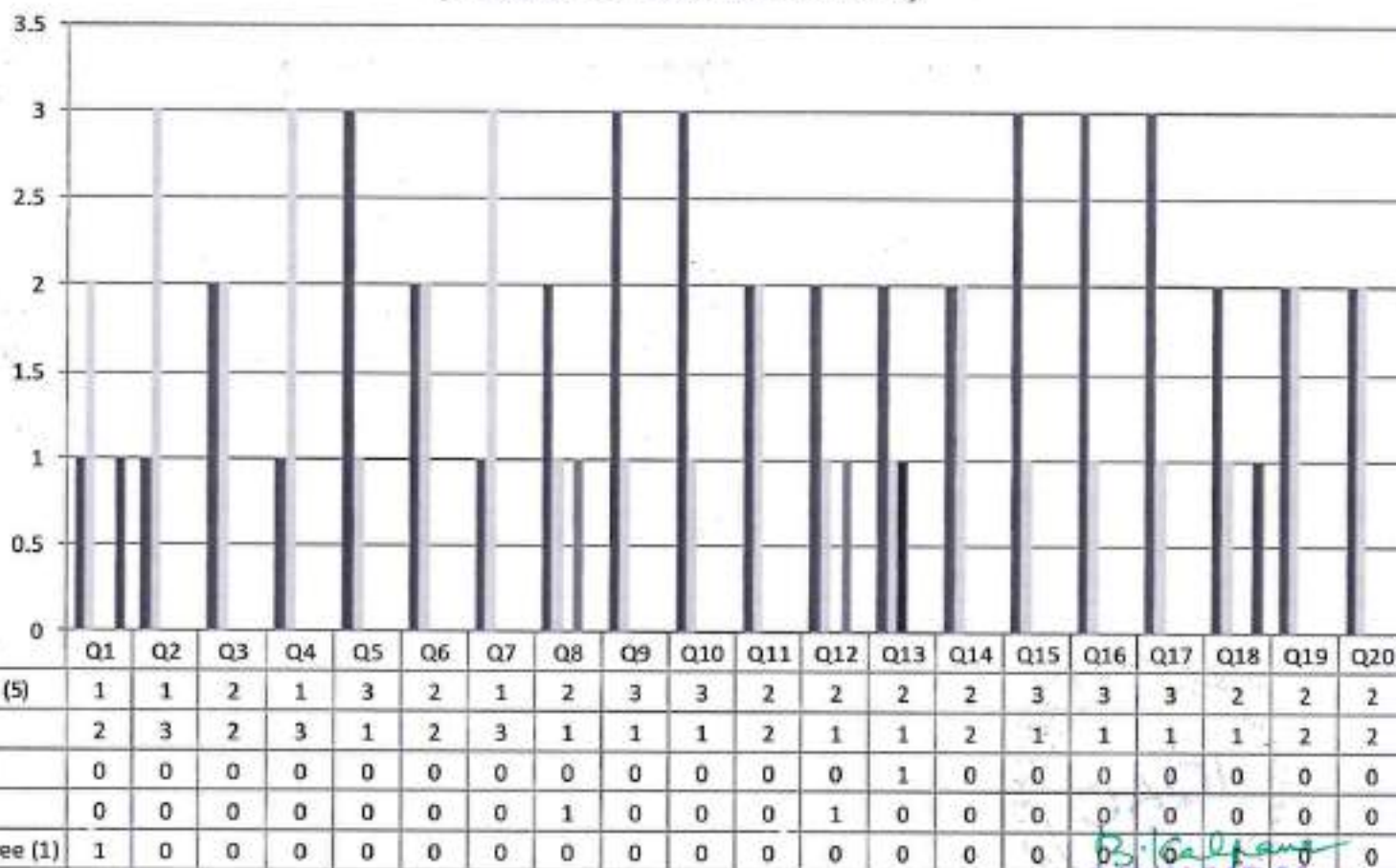
Gowrivakkam, Chennai-600073

Affiliated to University of Madras, ISO 9001:2015 Certified Institution

EMPLOYER FEEDBACK ON CURRICULUM, INFRASTRUCTURE FACILITIES & AMBIENCE OF THE INSTITUTION - 2019-2020

M.Sc. BIOCHEMISTRY

(NUMBER OF RESPONDENTS - 4)



B. Kalpana
PRINCIPAL
 PRINCE SHRI VENKATESHWARA
 ARTS AND SCIENCE COLLEGE
 GOWRIVAKKAM, CHENNAI-600 073



PRINCE SHRI VENKATESWARA ARTS AND SCIENCE COLLEGE

Gowrivakkam, Chennai-600073

Affiliated to University of Madras, ISO 9001:2015 Certified Institution.

EMPLOYER FEEDBACK ON CURRICULUM, INFRASTRUCTURE FACILITIES & AMBIENCE OF THE INSTITUTION – ANALYSIS REPORT

Academic Year **2019-20**
Department **M.Sc. Biotechnology**
Number of Respondents **4**

Feedback Rate: Strongly Agree (5), Agree (4), Neutral (3), Disagree (2), Strongly Disagree (1)

| S. No | Feedback on Curriculum, infrastructure facilities & ambience of the institution | 5 | 4 | 3 | 2 | 1 |
|-------|--|---|---|---|---|---|
| 1 | Rate the students of PSVASC on general communication skills. (Related to Academic process and performance of students) | 1 | 2 | 0 | 1 | 0 |
| 2 | Rate the students of PSVASC on developing practical solutions to work place problems (Related to Academic process and performance of students) | 3 | 1 | 0 | 0 | 0 |
| 3 | Rate the students of PSVASC on working as a team (Related to Academic process and performance of students) | 1 | 1 | 2 | 0 | 0 |
| 4 | Rate the students of PSVASC on taking appropriate level of responsibility (Related to Academic process and performance of students) | 2 | 1 | 1 | 0 | 0 |
| 5 | Rate the students of PSVASC on Time Management (Related to Academic process and performance of students) | 2 | 1 | 0 | 0 | 1 |
| 6 | Rate the students of PSVASC on Decision Making (Related to Academic process and performance of students) | 2 | 1 | 0 | 1 | 0 |
| 7 | Rate the students of PSVASC on response to workplace challenges (Related to Academic process and performance of students) | 3 | 1 | 0 | 0 | 0 |



PRINCE SHRI VENKATESWARA ARTS AND SCIENCE COLLEGE

Gowrivakkam, Chennai-600073.

Affiliated to University of Madras, ISO 9001:2015 Certified Institution

| | | | | | | |
|----|---|---|---|---|---|---|
| 8 | Rate the student's ability to contribute for reaching the goal of organization (Related to Academic process and performance of students) | 2 | 1 | 1 | 0 | 0 |
| 9 | Rate the students of PSVASC on technical knowledge and skills (Related to Academic process and performance of students) | 3 | 1 | 0 | 0 | 0 |
| 10 | Rate the students of PSVASC on leadership quality and taking up responsibilities (Related to Academic process and performance of students) | 1 | 3 | 0 | 0 | 0 |
| 11 | Rate the students of PSVASC on relationship with seniors / peers / subordinates and work ethics (Related to Academic process and performance of students) | 2 | 1 | 0 | 1 | 0 |
| 12 | Rate students of PSVASC on Creativity and Innovations. (Related to Academic process and performance of students) | 2 | 2 | 0 | 0 | 0 |
| 13 | Rate the students of PSVASC on lifelong learning and technology adaptability (Related to Academic process and performance of students) | 2 | 1 | 0 | 0 | 1 |
| 14 | Rate students of PSVASC on sustainability, environment awareness and social activities (Related to Academic process and performance of students) | 2 | 1 | 1 | 0 | 0 |
| 15 | Rate the learning ambience of the institution (Related to ambience of the institution) | 1 | 2 | 0 | 1 | 0 |
| 16 | Rate the functioning of Placement Cell (Related to ambience of the institution) | 3 | 1 | 0 | 0 | 0 |
| 17 | Rate the laboratory and research facilities of the institution (Related to infrastructure facility of the institution) | 3 | 1 | 0 | 0 | 0 |
| 18 | Rate the infrastructure facility of the institution to organize Pool Campus (Related to infrastructure facility of the institution) | 1 | 1 | 2 | 0 | 0 |
| 19 | Rate the WIFI facility with adequate bandwidth provided by the institution (Related to infrastructure facility of the institution) | 2 | 1 | 1 | 0 | 0 |
| 20 | Rate the overall impression of the institution (Related to infrastructure facility of the institution) | 1 | 3 | 0 | 0 | 0 |

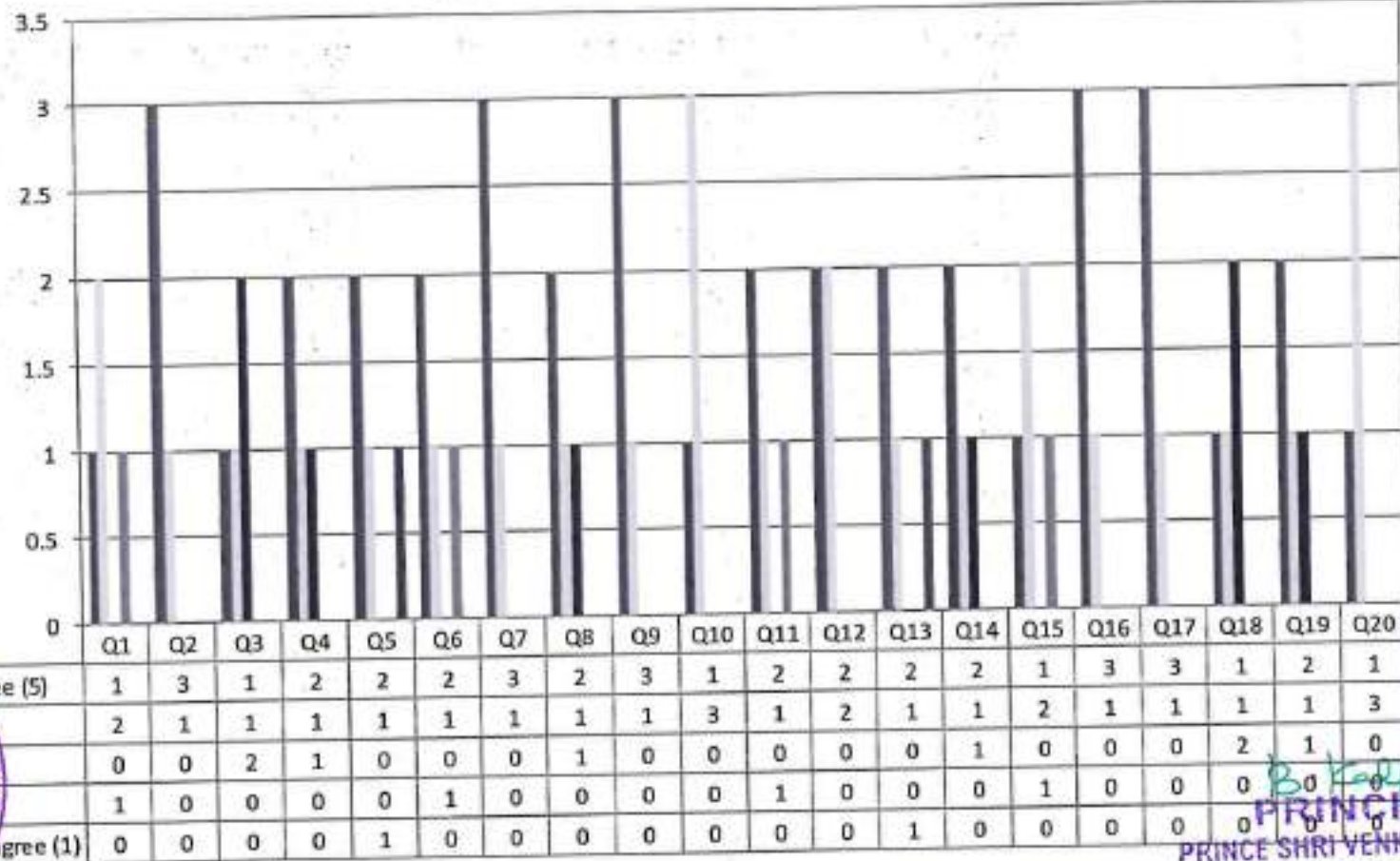


B. Kalpana
PRINCIPAL
PRINCE SHRI VENKATESHWARA
ARTS AND SCIENCE COLLEGE
GOWRIVAKKAM, CHENNAI-600 073.



PRINCE SHRI VENKATESWARA ARTS AND SCIENCE COLLEGE
 Gowrivakkam, Chennai-600073.
 Affiliated to University of Madras, ISO 9001:2015 Certified Institution

**EMPLOYER FEEDBACK ON CURRICULUM, INFRASTRUCTURE
 FACILITIES & AMBIENCE OF THE INSTITUTION - 2019-2020**
M.Sc. BIOTECHNOLOGY
 (NUMBER OF RESPONDENTS - 4)



B. Kalpana
PRINCIPAL
 PRINCE SHRI VENKATESHWARA
 ARTS AND SCIENCE COLLEGE
 GOWRIVAKKAM, CHENNAI-600 073.